

Product Name: SIK1 Rabbit Polyclonal Antibody
Catalog #: AP Rab17898



Summary

Production Name	SIK1 Rabbit Polyclonal Antibody
Description	Rabbit Polyclonal Antibody
Host	Rabbit
Application	WB
Reactivity	Human,Rat

Performance

Conjugation	Unconjugated
Modification	Unmodified
Isotype	IgG
Clonality	Polyclonal
Form	Liquid
Storage	Store at 4°C short term. Aliquot and store at -20°C long term. Avoid freeze/thaw cycles.
Buffer	Liquid in PBS containing 50% glycerol, 0.5% BSA and 0.02% New type preservative N.
Purification	Affinity purification

Immunogen

Gene Name	SIK1 SIK1; SIK; SNF1LK; Serine/threonine-protein kinase SIK1; Salt-inducible kinase 1; SIK-1;
Alternative Names	Serine/threonine-protein kinase SNF1-like kinase 1; Serine/threonine-protein kinase SNF1LK
Gene ID	150094.0
SwissProt ID	P57059.The antiserum was produced against synthesized peptide derived from human SIK. AA range:148-197

Application

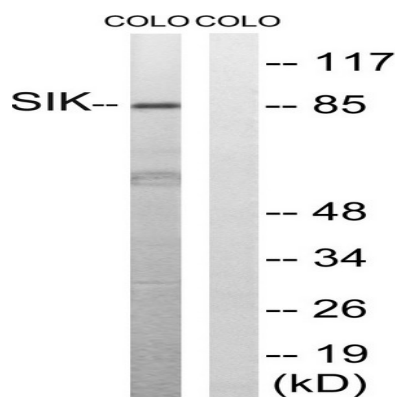
Dilution Ratio	WB 1:500-2000
Molecular Weight	85kD

Background

catalytic activity:ATP + a protein = ADP + a phosphoprotein.,cofactor:Magnesium.,enzyme regulation:Activated by phosphorylation on Thr-182 by STK11 in complex with STE20-related adapter-alpha (STRAD alpha) pseudo kinase and CAB39.,function:Transient role during the earliest stages of myocardial cell differentiation and/or primitive chamber formation and may also be important for the earliest stages of skeletal muscle growth and/or differentiation. Potential role in G2/M cell cycle regulation. Inhibits CREB activity by phosphorylating and repressing the CREB-specific coactivators, CRTC1-3.,PTM:Phosphorylated upon DNA damage, probably by ATM or ATR.,similarity:Belongs to the protein kinase superfamily. CAMK Ser/Thr protein kinase family. AMPK subfamily.,similarity:Contains 1 protein kinase domain.,similarity:Contains 1 UBA domain.,subcellular location:Translocates to the cytoplasm on phosphorylation where it binds binding to YWHAZ.,subunit:Binds to and is activated by YWHAZ when phosphorylated on Thr-182.,catalytic activity:ATP + a protein = ADP + a phosphoprotein.,cofactor:Magnesium.,enzyme regulation:Activated by phosphorylation on Thr-182 by STK11 in complex with STE20-related adapter-alpha (STRAD alpha) pseudo kinase and CAB39.,function:Transient role during the earliest stages of myocardial cell differentiation and/or primitive chamber formation and may also be important for the earliest stages of skeletal muscle growth and/or differentiation. Potential role in G2/M cell cycle regulation. Inhibits CREB activity by phosphorylating and repressing the CREB-specific coactivators, CRTC1-3.,PTM:Phosphorylated upon DNA damage, probably by ATM or ATR.,similarity:Belongs to the protein kinase superfamily. CAMK Ser/Thr protein kinase family. AMPK subfamily.,similarity:Contains 1 protein kinase domain.,similarity:Contains 1 UBA domain.,subcellular location:Translocates to the cytoplasm on phosphorylation where it binds binding to YWHAZ.,subunit:Binds to and is activated by YWHAZ when phosphorylated on Thr-182.,

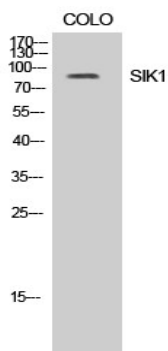
Research Area

Image Data



Western blot analysis of lysates from COLO205 cells, treated with PMA 125ng/ml 30', using SIK Antibody. The lane on the right is blocked with the synthesized peptide.

Product Name: SIK1 Rabbit Polyclonal Antibody
Catalog #: APRab17898



Western Blot analysis of COLO cells using SIK1 Polyclonal Antibody

Note

For research use only.