

Product Name: Sideroflexin-4 Rabbit Polyclonal Antibody
Catalog #: APRab17888

Summary

Production Name	Sideroflexin-4 Rabbit Polyclonal Antibody
Description	Rabbit Polyclonal Antibody
Host	Rabbit
Application	WB
Reactivity	Human

Performance

Conjugation	Unconjugated
Modification	Unmodified
Isotype	IgG
Clonality	Polyclonal
Form	Liquid
Storage	Store at 4°C short term. Aliquot and store at -20°C long term. Avoid freeze/thaw cycles.
Buffer	Liquid in PBS containing 50% glycerol, 0.5% BSA and 0.02% New type preservative N.
Purification	Affinity purification

Immunogen

Gene Name	SFXN4
Alternative Names	SFXN4; BCM1; Sideroflexin-4; Breast cancer resistance marker 1
Gene ID	119559.0
SwissProt ID	Q6P4A7. The antiserum was produced against synthesized peptide derived from human SFXN4. AA range:1-50

Application

Dilution Ratio	WB 1:500-2000
Molecular Weight	37kD

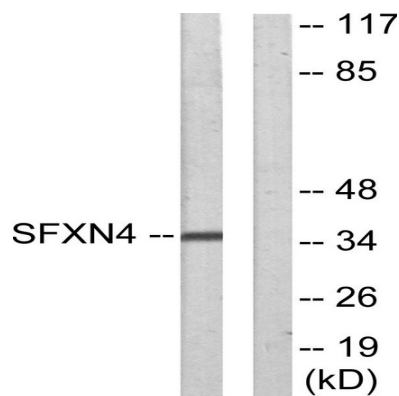
Product Name: Sideroflexin-4 Rabbit Polyclonal Antibody
Catalog #: AP Rab17888

Background

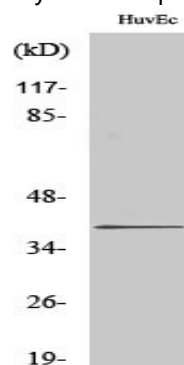
This gene encodes a member of the sideroflexin family. The encoded protein is a transmembrane protein of the inner mitochondrial membrane, and is required for mitochondrial respiratory homeostasis and erythropoiesis. Mutations in this gene are associated with mitochondriopathy and macrocytic anemia. Alternatively spliced transcript variants have been found in this gene. [provided by RefSeq, Jan 2014],function:Potential iron transporter.,similarity:Belongs to the sideroflexin family.,

Research Area

Image Data



Western blot analysis of lysates from HUVEC cells, using SFXN4 Antibody. The lane on the right is blocked with the synthesized peptide.



Western Blot analysis of various cells using Sideroflexin-4 Polyclonal Antibody

Note

For research use only.