

Product Name: Shd Rabbit Polyclonal Antibody
Catalog #: APRab17858



Summary

Production Name	Shd Rabbit Polyclonal Antibody
Description	Rabbit Polyclonal Antibody
Host	Rabbit
Application	WB,ELISA
Reactivity	Human,Rat,Mouse

Performance

Conjugation	Unconjugated
Modification	Unmodified
Isotype	IgG
Clonality	Polyclonal
Form	Liquid
Storage	Store at 4°C short term. Aliquot and store at -20°C long term. Avoid freeze/thaw cycles.
Buffer	Liquid in PBS containing 50% glycerol, 0.5% BSA and 0.02% New type preservative N.
Purification	Affinity purification

Immunogen

Gene Name	SHD
Alternative Names	SHD; SH2 domain-containing adapter protein D
Gene ID	56961.0
SwissProt ID	Q96IW2.The antiserum was produced against synthesized peptide derived from human SHD. AA range:141-190

Application

Dilution Ratio	WB 1:500 - 1:2000. ELISA: 1:40000.
Molecular Weight	130kD

Background

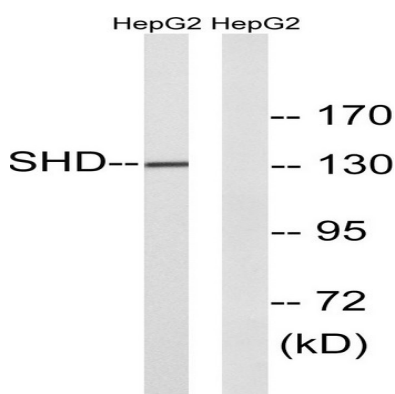
Product Name: Shd Rabbit Polyclonal Antibody
Catalog #: APRab17858



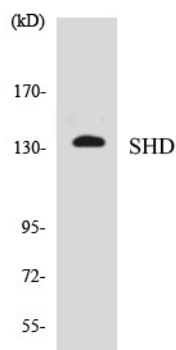
function:May function as an adapter protein.,PTM:Tyrosine phosphorylated by ABL.,similarity:Contains 1 SH2 domain.,function:May function as an adapter protein.,PTM:Tyrosine phosphorylated by ABL.,similarity:Contains 1 SH2 domain.,

Research Area

Image Data



Western blot analysis of lysates from HepG2 cells, using SHD Antibody. The lane on the right is blocked with the synthesized peptide.



Western blot analysis of the lysates from HepG2 cells using SHD antibody.

Note

For research use only.