

**Product Name: SH3TC1 Rabbit Polyclonal Antibody**  
**Catalog #: AP Rab17848**



## Summary

<b>Production Name</b>	SH3TC1 Rabbit Polyclonal Antibody
<b>Description</b>	Rabbit Polyclonal Antibody
<b>Host</b>	Rabbit
<b>Application</b>	WB,ELISA
<b>Reactivity</b>	Human,Rat,Mouse

## Performance

<b>Conjugation</b>	Unconjugated
<b>Modification</b>	Unmodified
<b>Isotype</b>	IgG
<b>Clonality</b>	Polyclonal
<b>Form</b>	Liquid
<b>Storage</b>	Store at 4°C short term. Aliquot and store at -20°C long term. Avoid freeze/thaw cycles.
<b>Buffer</b>	Liquid in PBS containing 50% glycerol, 0.5% BSA and 0.02% New type preservative N.
<b>Purification</b>	Affinity purification

## Immunogen

<b>Gene Name</b>	SH3TC1
<b>Alternative Names</b>	SH3TC1; SH3 domain and tetratricopeptide repeat-containing protein 1
<b>Gene ID</b>	54436.0
<b>SwissProt ID</b>	Q8TE82.The antiserum was produced against synthesized peptide derived from human SH3TC1. AA range:391-440

## Application

<b>Dilution Ratio</b>	WB 1:500 - 1:2000. ELISA: 1:10000
<b>Molecular Weight</b>	150kD

## Background

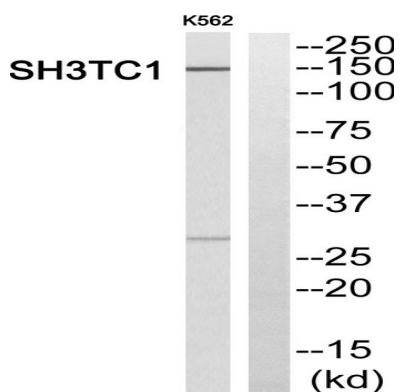
**Product Name: SH3TC1 Rabbit Polyclonal Antibody**  
**Catalog #: APRab17848**



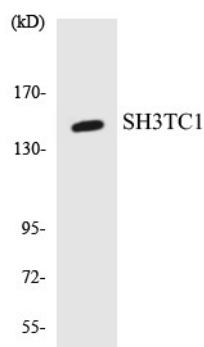
similarity:Contains 1 SH3 domain.,similarity:Contains 9 TPR repeats.,similarity:Contains 1 SH3 domain.,similarity:Contains 9 TPR repeats.,

## Research Area

## Image Data



Western blot analysis of SH3TC1 Antibody. The lane on the right is blocked with the SH3TC1 peptide.



Western blot analysis of the lysates from RAW264.7 cells using SH3TC1 antibody.

## Note

For research use only.