

Product Name: SH2D4A Rabbit Polyclonal Antibody
Catalog #: APRab17836



Summary

Production Name	SH2D4A Rabbit Polyclonal Antibody
Description	Rabbit Polyclonal Antibody
Host	Rabbit
Application	IHC,ELISA
Reactivity	Human,Rat,Mouse

Performance

Conjugation	Unconjugated
Modification	Unmodified
Isotype	IgG
Clonality	Polyclonal
Form	Liquid
Storage	Store at 4°C short term. Aliquot and store at -20°C long term. Avoid freeze/thaw cycles.
Buffer	Liquid in PBS containing 50% glycerol, 0.5% BSA and 0.02% New type preservative N.
Purification	Affinity purification

Immunogen

Gene Name	SH2D4A
Alternative Names	SH2D4A; SH2A; SH2 domain-containing protein 4A; Protein SH(2)A
Gene ID	63898.0
SwissProt ID	Q9H788.The antiserum was produced against synthesized peptide derived from human SH2D4A. AA range:180-220

Application

Dilution Ratio	IHC 1:100-1:300 ELISA: 1:20000
Molecular Weight	

Background

sequence caution:Translated as stop.,sequence caution:Translation N-terminally extended.,similarity:Contains 1 SH2

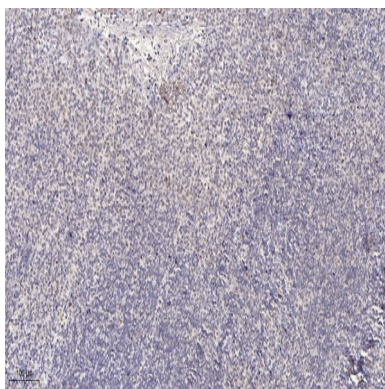
Product Name: SH2D4A Rabbit Polyclonal Antibody
Catalog #: APRab17836



domain.,tissue specificity:Ubiquitously expressed. Aberrantly expressed in some cancers.,sequence caution:Translated as stop.,sequence caution:Translation N-terminally extended.,similarity:Contains 1 SH2 domain.,tissue specificity:Ubiquitously expressed. Aberrantly expressed in some cancers.,

Research Area

Image Data



Immunohistochemical analysis of paraffin-embedded human tonsil. 1, Antibody was diluted at 1:200 (4° overnight) . 2, Tris-EDTA,pH9.0 was used for antigen retrieval. 3,Secondary antibody was diluted at 1:200 (room temperature, 30min) .

Note

For research use only.