

Product Name: SFT2D2 Rabbit Polyclonal Antibody
Catalog #: AP Rab17802



Summary

Production Name	SFT2D2 Rabbit Polyclonal Antibody
Description	Rabbit Polyclonal Antibody
Host	Rabbit
Application	WB
Reactivity	Human,Mouse,Rat

Performance

Conjugation	Unconjugated
Modification	Unmodified
Isotype	IgG
Clonality	Polyclonal
Form	Liquid
Storage	Store at 4°C short term. Aliquot and store at -20°C long term. Avoid freeze/thaw cycles.
Buffer	Liquid in PBS containing 50% glycerol, 0.5% BSA and 0.02% New type preservative N.
Purification	Affinity purification

Immunogen

Gene Name	SFT2D2
Alternative Names	SFT2D2; Vesicle transport protein SFT2B; SFT2 domain-containing protein 2
Gene ID	375035.0
SwissProt ID	O95562.The antiserum was produced against synthesized peptide derived from human SFT2B. AA range:61-110

Application

Dilution Ratio	WB 1:500-2000 ELISA 2000-20000
Molecular Weight	18kD

Background

function:May be involved in fusion of retrograde transport vesicles derived from an endocytic compartment with the Golgi

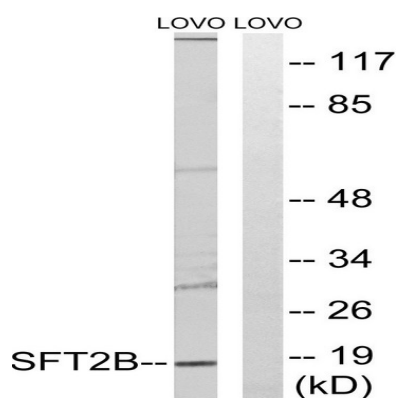
Product Name: SFT2D2 Rabbit Polyclonal Antibody
Catalog #: APRab17802



complex.,similarity:Belongs to the SFT2 family.,function:May be involved in fusion of retrograde transport vesicles derived from an endocytic compartment with the Golgi complex.,similarity:Belongs to the SFT2 family.,

Research Area

Image Data



Western blot analysis of lysates from LOVO cells, using SFT2B Antibody. The lane on the right is blocked with the synthesized peptide.

Note

For research use only.