

Product Name: SerpinA6 Rabbit Polyclonal Antibody
Catalog #: APRab17766



Summary

| | |
|------------------------|-------------------------------------|
| Production Name | SerpinA6 Rabbit Polyclonal Antibody |
| Description | Rabbit Polyclonal Antibody |
| Host | Rabbit |
| Application | IHC,ELISA |
| Reactivity | Human,Rat,Mouse |

Performance

| | |
|---------------------|--|
| Conjugation | Unconjugated |
| Modification | Unmodified |
| Isotype | IgG |
| Clonality | Polyclonal |
| Form | Liquid |
| Storage | Store at 4°C short term. Aliquot and store at -20°C long term. Avoid freeze/thaw cycles. |
| Buffer | Liquid in PBS containing 50% glycerol, 0.5% BSA and 0.02% New type preservative N. |
| Purification | Affinity purification |

Immunogen

| | |
|--------------------------|--|
| Gene Name | SERPINA6 |
| Alternative Names | SERPINA6; CBG; Corticosteroid-binding globulin; CBG; Serpin A6; Transcortin |
| Gene ID | 866.0 |
| SwissProt ID | P08185.Synthesized peptide derived from the Internal region of human SerpinA6. |

Application

| | |
|-------------------------|-------------------------------|
| Dilution Ratio | IHC 1:100-1:300 ELISA: 1:5000 |
| Molecular Weight | |

Background

This gene encodes an alpha-globulin protein with corticosteroid-binding properties. This is the major transport protein for glucocorticoids and progestins in the blood of most vertebrates. The gene localizes to a chromosomal region containing

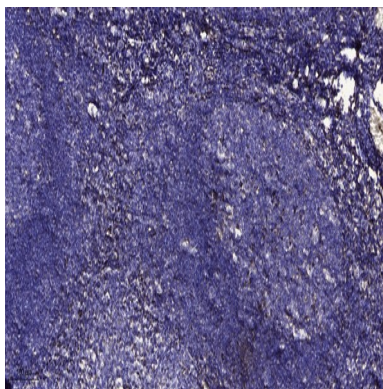
Product Name: SerpinA6 Rabbit Polyclonal Antibody
Catalog #: APRab17766



several closely related serine protease inhibitors which may have evolved by duplication events. [provided by RefSeq, Jul 2008],disease:Defects in SERPINA6 are a cause of corticosteroid-binding globulin deficiency (CBG deficiency) [MIM:611489]. CBG deficiency is an extremely rare hereditary disorder characterized by reduced corticosteroid-binding capacity with normal or low plasma corticosteroid-binding globulin concentration, and normal or low basal cortisol levels associated with hypo/hypertension and muscle fatigue.,function:Major transport protein for glucocorticoids and progestins in the blood of almost all vertebrate species.,online information:Transcortin entry,PTM:Glycosylation in position Asn-260 is needed for steroid binding.,PTM:N-glycosylated; binds 5 oligosaccharide chains.,similarity:Belongs to the serpin family.,tissue specificity:Plasma; synthesized in liver. Has also been identified in a number of glycocorticoid responsive cells.,

Research Area

Image Data



Immunohistochemical analysis of paraffin-embedded human tonsil. 1, Antibody was diluted at 1:200 (4° overnight) . 2, Tris-EDTA,pH9.0 was used for antigen retrieval. 3,Secondary antibody was diluted at 1:200 (room temperature, 30min) .

Note

For research use only.