

**Product Name: SERGEF Rabbit Polyclonal Antibody**  
**Catalog #: APRab17751**



## Summary

<b>Production Name</b>	SERGEF Rabbit Polyclonal Antibody
<b>Description</b>	Rabbit Polyclonal Antibody
<b>Host</b>	Rabbit
<b>Application</b>	WB,ELISA
<b>Reactivity</b>	Human,Rat,Mouse

## Performance

<b>Conjugation</b>	Unconjugated
<b>Modification</b>	Unmodified
<b>Isotype</b>	IgG
<b>Clonality</b>	Polyclonal
<b>Form</b>	Liquid
<b>Storage</b>	Store at 4°C short term. Aliquot and store at -20°C long term. Avoid freeze/thaw cycles.
<b>Buffer</b>	Liquid in PBS containing 50% glycerol, 0.5% BSA and 0.02% New type preservative N.
<b>Purification</b>	Affinity purification

## Immunogen

<b>Gene Name</b>	SERGEF SERGEF; DELGEF; GNEFR; Secretion-regulating guanine nucleotide exchange factor;
<b>Alternative Names</b>	Deafness locus-associated putative guanine nucleotide exchange factor; DelGEF; Guanine nucleotide exchange factor-related protein
<b>Gene ID</b>	26297.0
<b>SwissProt ID</b>	Q9UGK8.The antiserum was produced against synthesized peptide derived from human SERGEF. AA range:179-228

## Application

<b>Dilution Ratio</b>	WB 1:500-2000 ELISA 2000-20000
<b>Molecular Weight</b>	50kD

**Product Name: SERGEF Rabbit Polyclonal Antibody**  
**Catalog #: AP Rab17751**



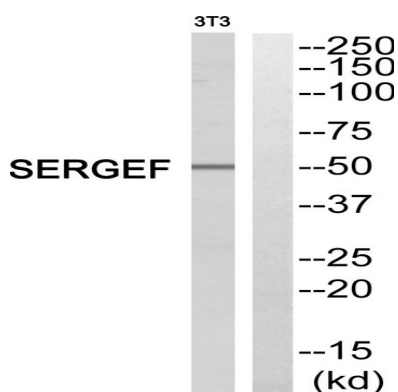
## Background

function: Probable guanine nucleotide exchange factor (GEF), which may be involved in the secretion process., PTM: Phosphorylated upon DNA damage, probably by ATM or ATR., similarity: Contains 7 RCC1 repeats., subunit: Interacts with SEC5. The interaction occurs only in the presence of magnesium or manganese and is stimulated by dCTP or GTP., function: Probable guanine nucleotide exchange factor (GEF), which may be involved in the secretion process., PTM: Phosphorylated upon DNA damage, probably by ATM or ATR., similarity: Contains 7 RCC1 repeats., subunit: Interacts with SEC5. The interaction occurs only in the presence of magnesium or manganese and is stimulated by dCTP or GTP.,

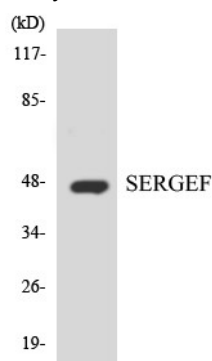
## Research Area

Regulation of Actin Dynamics; AMPK

## Image Data



Western blot analysis of SERGEF Antibody. The lane on the right is blocked with the SERGEF peptide.



Western blot analysis of the lysates from HT-29 cells using SERGEF antibody.

## Note

For research use only.

**Product Name: SERGEF Rabbit Polyclonal Antibody**  
**Catalog #: APRab17751**

---

