

**Product Name: SENP5 Rabbit Polyclonal Antibody**  
**Catalog #: APRab17728**



## Summary

<b>Production Name</b>	SENP5 Rabbit Polyclonal Antibody
<b>Description</b>	Rabbit Polyclonal Antibody
<b>Host</b>	Rabbit
<b>Application</b>	IHC, WB, ELISA
<b>Reactivity</b>	Human, Mouse, Monkey

## Performance

<b>Conjugation</b>	Unconjugated
<b>Modification</b>	Unmodified
<b>Isotype</b>	IgG
<b>Clonality</b>	Polyclonal
<b>Form</b>	Liquid
<b>Storage</b>	Store at 4°C short term. Aliquot and store at -20°C long term. Avoid freeze/thaw cycles.
<b>Buffer</b>	Liquid in PBS containing 50% glycerol, 0.5% BSA and 0.02% New type preservative N.
<b>Purification</b>	Affinity purification

## Immunogen

<b>Gene Name</b>	SENP5
<b>Alternative Names</b>	SENP5; FKSG45; Sentrin-specific protease 5; Sentrin/SUMO-specific protease SENP5
<b>Gene ID</b>	205564.0
<b>SwissProt ID</b>	Q96HI0. The antiserum was produced against synthesized peptide derived from human SENP5. AA range: 651-700

## Application

<b>Dilution Ratio</b>	WB 1:500 - 1:2000. IHC 1:100 - 1:300. ELISA: 1:20000..
<b>Molecular Weight</b>	86kD

## Background

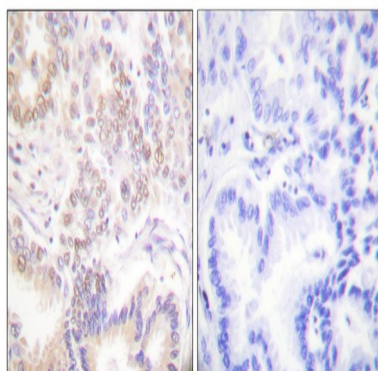
**Product Name: SENP5 Rabbit Polyclonal Antibody**  
**Catalog #: AP Rab17728**



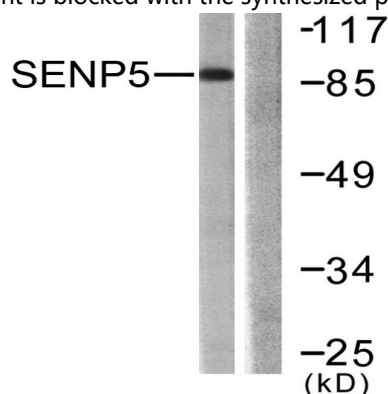
The reversible posttranslational modification of proteins by the addition of small ubiquitin-like SUMO proteins (see SUMO1; MIM 601912) is required for numerous biologic processes. SUMO-specific proteases, such as SENP5, are responsible for the initial processing of SUMO precursors to generate a C-terminal diglycine motif required for the conjugation reaction. They also have isopeptidase activity for the removal of SUMO from high molecular mass SUMO conjugates (Di Bacco et al., 2006 [PubMed 16738315]).[supplied by OMIM, Jun 2009],function:Protease that catalyzes two essential functions in the SUMO pathway: processing of full-length SUMO3 to its mature form and deconjugation of SUMO2 and SUMO3 from targeted proteins. Has weak proteolytic activity against full-length SUMO1 or SUMO1 conjugates. Required for cell division.,similarity:Belongs to the peptidase C48 family.,

## Research Area

## Image Data

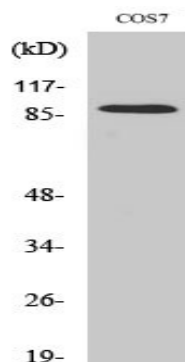


Immunohistochemistry analysis of paraffin-embedded human lung carcinoma tissue, using SENP5 Antibody. The picture on the right is blocked with the synthesized peptide.



Western blot analysis of lysates from COS7 cells, using SENP5 Antibody. The lane on the right is blocked with the synthesized peptide.

**Product Name: SENP5 Rabbit Polyclonal Antibody**  
**Catalog #: APRab17728**



Western Blot analysis of various cells using SENP5 Polyclonal Antibody cells nucleus extracted by Minute TM Cytoplasmic and Nuclear Fractionation kit (SC-003, Inventbiotech, MN, USA) .

### **Note**

For research use only.