

**Product Name: SENP1 Rabbit Polyclonal Antibody**  
**Catalog #: APRab17724**



## Summary

<b>Production Name</b>	SENP1 Rabbit Polyclonal Antibody
<b>Description</b>	Rabbit Polyclonal Antibody
<b>Host</b>	Rabbit
<b>Application</b>	IHC, WB, ELISA
<b>Reactivity</b>	Human, Mouse

## Performance

<b>Conjugation</b>	Unconjugated
<b>Modification</b>	Unmodified
<b>Isotype</b>	IgG
<b>Clonality</b>	Polyclonal
<b>Form</b>	Liquid
<b>Storage</b>	Store at 4°C short term. Aliquot and store at -20°C long term. Avoid freeze/thaw cycles.
<b>Buffer</b>	Liquid in PBS containing 50% glycerol, 0.5% BSA and 0.02% New type preservative N.
<b>Purification</b>	Affinity purification

## Immunogen

<b>Gene Name</b>	SENP1
<b>Alternative Names</b>	SENP1; Sentrin-specific protease 1; Sentrin/SUMO-specific protease SENP1
<b>Gene ID</b>	29843.0
<b>SwissProt ID</b>	Q9P0U3. The antiserum was produced against synthesized peptide derived from human SENP1. AA range:1-50

## Application

<b>Dilution Ratio</b>	WB 1:500 - 1:2000. IHC 1:100 - 1:300. ELISA: 1:20000..
<b>Molecular Weight</b>	73kD

## Background

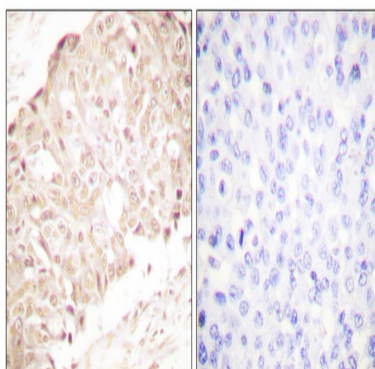
**Product Name: SENP1 Rabbit Polyclonal Antibody**  
**Catalog #: APRab17724**



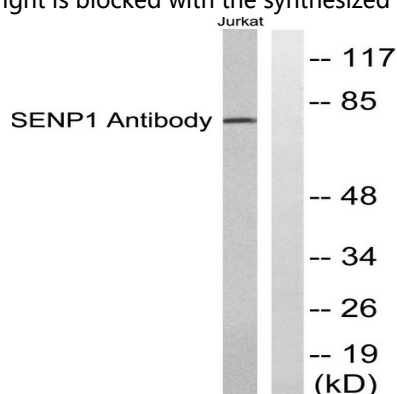
This gene encodes a cysteine protease that specifically targets members of the small ubiquitin-like modifier (SUMO) protein family. This protease regulates SUMO pathways by deconjugating sumoylated proteins. This protease also functions to process the precursor SUMO proteins into their mature form. Alternate splicing results in multiple transcript variants. [provided by RefSeq, Jun 2012],function:Protease that catalyzes two essential functions in the SUMO pathway: processing of full-length SUMO1, SUMO2 and SUMO3 to their mature forms and deconjugation of SUMO1, SUMO2 and SUMO3 from targeted proteins. Deconjugates SUMO1 from HIPK2. Deconjugates SUMO1 from HDAC1, which decreases its transcriptional repression activity.,similarity:Belongs to the peptidase C48 family.,subcellular location:Shuttles between cytoplasm and nucleus.,tissue specificity:Highly expressed in testis. Expressed at lower levels in thymus, pancreas, spleen, liver, ovary and small intestine.,

## Research Area

## Image Data

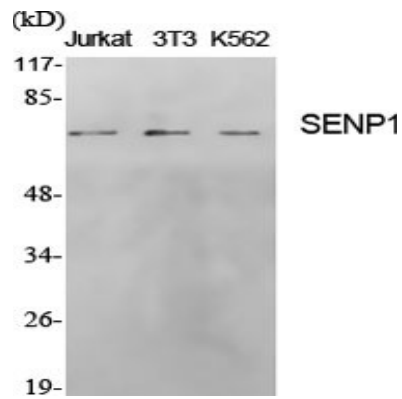


Immunohistochemistry analysis of paraffin-embedded human breast carcinoma tissue, using SENP1 Antibody. The picture on the right is blocked with the synthesized peptide.



Western blot analysis of lysates from Jurkat cells, using SENP1 Antibody. The lane on the right is blocked with the synthesized peptide.

**Product Name: SENP1 Rabbit Polyclonal Antibody**  
**Catalog #: APRab17724**



Western Blot analysis of various cells using SENP1 Polyclonal Antibody

**Note**

For research use only.