

Product Name: Secretogranin-1 Rabbit Polyclonal Antibody
Catalog #: APRab17700

Summary

Production Name	Secretogranin-1 Rabbit Polyclonal Antibody
Description	Rabbit Polyclonal Antibody
Host	Rabbit
Application	IHC,ELISA
Reactivity	Human,Mouse,Rat

Performance

Conjugation	Unconjugated
Modification	Unmodified
Isotype	IgG
Clonality	Polyclonal
Form	Liquid
Storage	Store at 4°C short term. Aliquot and store at -20°C long term. Avoid freeze/thaw cycles.
Buffer	Liquid in PBS containing 50% glycerol, 0.5% BSA and 0.02% New type preservative N.
Purification	Affinity purification

Immunogen

Gene Name	CHGB SCG1
Alternative Names	Secretogranin-1 (Chromogranin-B;CgB;Secretogranin I;Sgl) [Cleaved into: GAWK peptide; CCB peptide]
Gene ID	1114.0
SwissProt ID	P05060.Synthesized peptide derived from human Secretogranin-1

Application

Dilution Ratio	IHC 1:50-200
Molecular Weight	78kD

Background

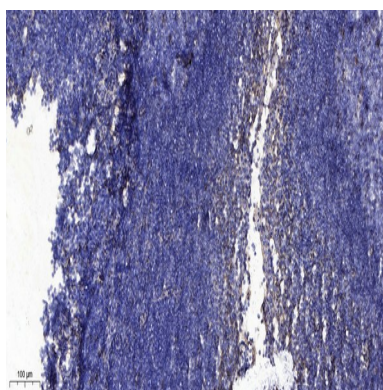
Product Name: Secretogranin-1 Rabbit Polyclonal Antibody
Catalog #: AP Rab17700



This gene encodes a tyrosine-sulfated secretory protein abundant in peptidergic endocrine cells and neurons. This protein may serve as a precursor for regulatory peptides. [provided by RefSeq, Jan 2009],function:Secretogranin-1 is a neuroendocrine secretory granule protein, which may be the precursor for other biologically active peptides.,PTM:Extensively processed by limited proteolysis at conserved basic residues. Alternative processing are seen in different tissues.,similarity:Belongs to the chromogranin/secretogranin protein family.,subcellular location:Neuroendocrine and endocrine secretory granules.,tissue specificity:Expressed in the adrenal medulla, and in pheochromocytoma. Not expressed in liver.,

Research Area

Image Data



Immunohistochemical analysis of paraffin-embedded human tonsil. 1, Antibody was diluted at 1:200 (4° overnight) . 2, Tris-EDTA,pH9.0 was used for antigen retrieval. 3,Secondary antibody was diluted at 1:200 (room temperature, 30min) .

Note

For research use only.