

## Summary

<b>Production Name</b>	SCGF Rabbit Polyclonal Antibody
<b>Description</b>	Rabbit Polyclonal Antibody
<b>Host</b>	Rabbit
<b>Application</b>	WB,IHC,ELISA
<b>Reactivity</b>	Human,Mouse

## Performance

<b>Conjugation</b>	Unconjugated
<b>Modification</b>	Unmodified
<b>Isotype</b>	IgG
<b>Clonality</b>	Polyclonal
<b>Form</b>	Liquid
<b>Storage</b>	Store at 4°C short term. Aliquot and store at -20°C long term. Avoid freeze/thaw cycles.
<b>Buffer</b>	Liquid in PBS containing 50% glycerol, 0.5% BSA and 0.02% New type preservative N.
<b>Purification</b>	Affinity purification

## Immunogen

<b>Gene Name</b>	CLEC11A CLEC11A; CLECSF3; LSLCL; SCGF; C-type lectin domain family 11 member A; C-type lectin superfamily member 3; Lymphocyte secreted C-type lectin; Stem cell growth factor; p47
<b>Alternative Names</b>	
<b>Gene ID</b>	6320.0
<b>SwissProt ID</b>	Q9Y240.The antiserum was produced against synthesized peptide derived from the N-terminal region of human CLEC11A. AA range:1-50

## Application

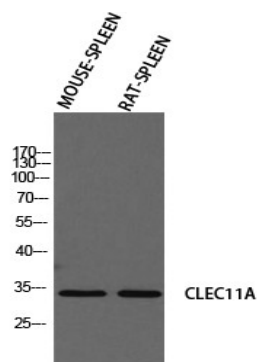
<b>Dilution Ratio</b>	WB 1:500 - 1:2000. IHC-p: 1:100-1:300. ELISA: 1:10000..
<b>Molecular Weight</b>	30kD

## Background

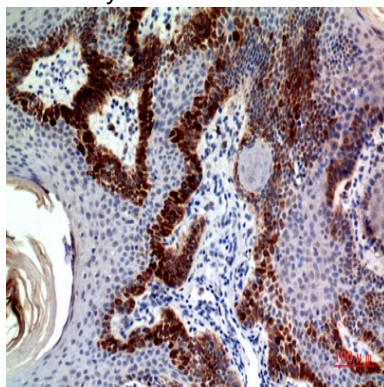
This gene encodes a member of the C-type lectin superfamily. The encoded protein is a secreted sulfated glycoprotein and functions as a growth factor for primitive hematopoietic progenitor cells. An alternative splice variant has been described but its biological nature has not been determined. [provided by RefSeq, Jul 2008],developmental stage:In the bone marrow, expression is limited to immature neutrophils. Expression was not detected in circulating mature neutrophils.,function:Stimulates the proliferation and differentiation of hematopoietic precursor cells from various lineages, including erythrocytes, lymphocytes, granulocytes and macrophages. Acts synergistically with other cytokines, including IL-3, GCSF, GMCSF and FLT3 ligand. Suppresses SCF-stimulated erythrocyte proliferation.,online information:Stem cell growth factor,PTM:O-glycosylated. Probably sulfated on the O-glycans.,similarity:Contains 1 C-type lectin domain.,tissue specificity:Expressed in skeletal tissues including bone marrow, chondrocytes, primary ossification center-associated cells, the perichondrium and periosteum. Lower levels of expression were detected in spleen, thymus, appendix and fetal liver.,

## Research Area

## Image Data



Western blot analysis of MOUSE-SPLEEN RAT-SPLEEN using CLEC11A antibody. Antibody was diluted at 1:2000. Secondary antibody was diluted at 1:20000



**Product Name: SCGF Rabbit Polyclonal Antibody**  
**Catalog #: APRab17644**



---

Immunohistochemical analysis of paraffin-embedded human-skin, antibody was diluted at 1:100

**Note**

For research use only.