

**Product Name: SCCA1/2 Rabbit Polyclonal Antibody**  
**Catalog #: APRab17639**



## Summary

<b>Production Name</b>	SCCA1/2 Rabbit Polyclonal Antibody
<b>Description</b>	Rabbit Polyclonal Antibody
<b>Host</b>	Rabbit
<b>Application</b>	WB,IHC,IF,ELISA
<b>Reactivity</b>	Human,Rat,Mouse

## Performance

<b>Conjugation</b>	Unconjugated
<b>Modification</b>	Unmodified
<b>Isotype</b>	IgG
<b>Clonality</b>	Polyclonal
<b>Form</b>	Liquid
<b>Storage</b>	Store at 4°C short term. Aliquot and store at -20°C long term. Avoid freeze/thaw cycles.
<b>Buffer</b>	Liquid in PBS containing 50% glycerol, 0.5% BSA and 0.02% New type preservative N.
<b>Purification</b>	Affinity purification

## Immunogen

<b>Gene Name</b>	SERPINB3/SERPINB4
<b>Alternative Names</b>	SERPINB3; SCCA; SCCA1; Serpin B3; Protein T4-A; Squamous cell carcinoma antigen 1; SCCA-1
<b>Gene ID</b>	6317.0
<b>SwissProt ID</b>	P29508.The antiserum was produced against synthesized peptide derived from the Internal region of human SERPINB3/4. AA range:111-160

## Application

<b>Dilution Ratio</b>	WB 1:500 - 1:2000. IHC-p: 1:100-1:300. ELISA: 1:20000.. IF 1:50-200
<b>Molecular Weight</b>	45kD

**Product Name: SCCA1/2 Rabbit Polyclonal Antibody**  
**Catalog #: APRab17639**

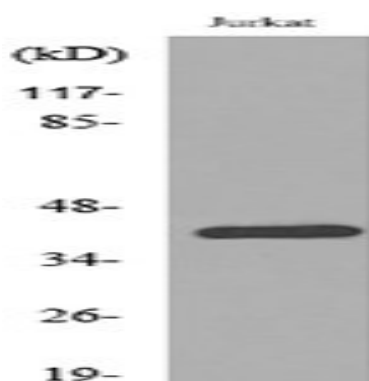


## Background

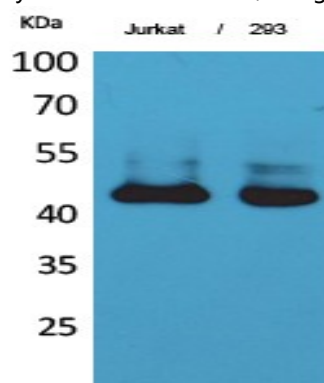
developmental stage: Its expression is closely related to cellular differentiation in both normal and malignant squamous cells., function: May act as a protease inhibitor to modulate the host immune response against tumor cells., similarity: Belongs to the serpin family., similarity: Belongs to the serpin family. Ov-serpin subfamily., subcellular location: Seems to also be secreted in plasma by cancerous cells but at a low level., tissue specificity: Squamous cells. Expressed in some hepatocellular carcinoma (at protein level), developmental stage: Its expression is closely related to cellular differentiation in both normal and malignant squamous cells., function: May act as a protease inhibitor to modulate the host immune response against tumor cells., similarity: Belongs to the serpin family., similarity: Belongs to the serpin family. Ov-serpin subfamily., subcellular location: Seems to also be secreted in plasma by cancerous cells but at a low level., tissue specificity: Squamous cells. Expressed in some hepatocellular carcinoma (at protein level),

## Research Area

## Image Data

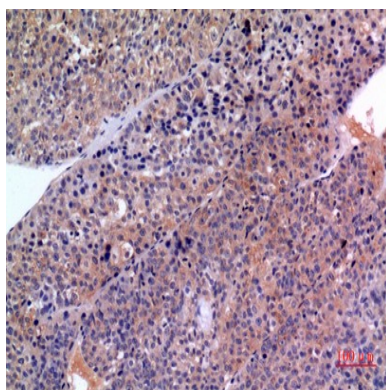


Western blot analysis of lysate from Jurkat cells, using SERPINB3/4 Antibody.

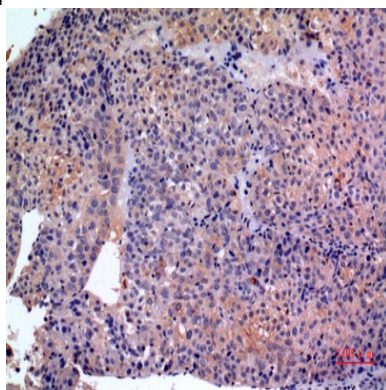


Western Blot analysis of Jurkat, 293 cells using SCCA1/2 Polyclonal Antibody.. Secondary antibody was diluted at 1:20000

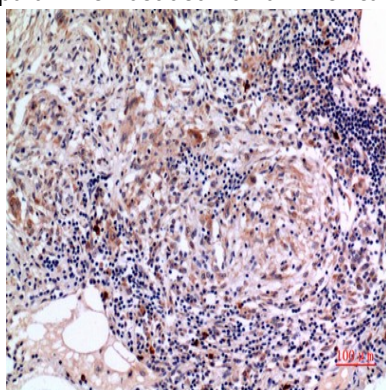
**Product Name: SCCA1/2 Rabbit Polyclonal Antibody**  
**Catalog #: APRab17639**



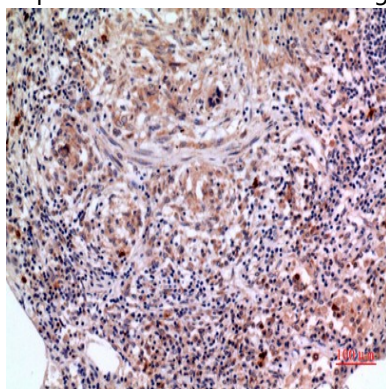
Immunohistochemical analysis of paraffin-embedded human-liver-cancer, antibody was diluted at 1:100



Immunohistochemical analysis of paraffin-embedded human-liver-cancer, antibody was diluted at 1:100



Immunohistochemical analysis of paraffin-embedded human-lung, antibody was diluted at 1:100



**Product Name: SCCA1/2 Rabbit Polyclonal Antibody**  
**Catalog #: APRab17639**



---

Immunohistochemical analysis of paraffin-embedded human-lung, antibody was diluted at 1:100

**Note**

For research use only.