
Summary

Production Name	SAP 14 Rabbit Polyclonal Antibody
Description	Rabbit Polyclonal Antibody
Host	Rabbit
Application	WB,ELISA
Reactivity	Human,Mouse

Performance

Conjugation	Unconjugated
Modification	Unmodified
Isotype	IgG
Clonality	Polyclonal
Form	Liquid
Storage	Store at 4°C short term. Aliquot and store at -20°C long term. Avoid freeze/thaw cycles.
Buffer	Liquid in PBS containing 50% glycerol, 0.5% BSA and 0.02% New type preservative N.
Purification	Affinity purification

Immunogen

Gene Name	SF3B14
Alternative Names	SF3B14; CGI-110; HSPC175; HT006; Pre-mRNA branch site protein p14; SF3b 14 kDa subunit
Gene ID	51639.0
SwissProt ID	Q9Y3B4.The antiserum was produced against synthesized peptide derived from human SF3B14. AA range:76-125

Application

Dilution Ratio	WB 1:500 - 1:2000. ELISA: 1:40000.
Molecular Weight	14kD

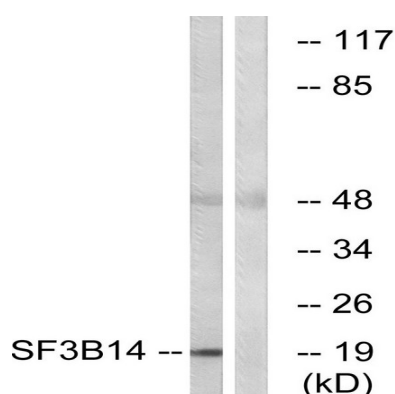
Background

This gene encodes a 14 kDa protein subunit of the splicing factor 3b complex. Splicing factor 3b associates with both the U2 and U11/U12 small nuclear ribonucleoprotein complexes (U2 snRNP) of spliceosomes. This 14 kDa protein interacts directly with subunit 1 of the splicing factor 3b complex. This 14 kDa protein also interacts directly with the adenosine that carries out the first transesterification step of splicing at the pre-mRNA branch site. [provided by RefSeq, Jul 2008],function:Necessary for the splicing of pre-mRNA. Directly contacts the pre-mRNA branch site adenosine for the first catalytic step of splicing. Enters the spliceosome and associates with the pre-mRNA branch site as part of the 17S U2 or, in the case of the minor spliceosome, as part of the 18S U11/U12 snRNP complex, and thus may facilitate the interaction of these snRNP with the branch sites of U2 and U12 respectively.,similarity:Contains 1 RRM (RNA recognition motif) domain.,subunit:Interacts with SF3B1/SF3b155 in the region of amino acids 255-424. Interacts to a lesser extent with SF3b130.,

Research Area

Spliceosome;

Image Data



Western blot analysis of lysates from HepG2 cells, using SF3B14 Antibody. The lane on the right is blocked with the synthesized peptide.



Western Blot analysis of various cells using SAP 14 Polyclonal Antibody cells nucleus extracted by Minute TM Cytoplasmic

Product Name: SAP 14 Rabbit Polyclonal Antibody
Catalog #: APRab17594



and Nuclear Fractionation kit (SC-003, Inventbiotech, MN, USA) .

Note

For research use only.