

**Product Name: SAF-A2 Rabbit Polyclonal Antibody**  
**Catalog #: APRab17575**



## Summary

<b>Production Name</b>	SAF-A2 Rabbit Polyclonal Antibody
<b>Description</b>	Rabbit Polyclonal Antibody
<b>Host</b>	Rabbit
<b>Application</b>	WB,IHC,ELISA
<b>Reactivity</b>	Human,Mouse

## Performance

<b>Conjugation</b>	Unconjugated
<b>Modification</b>	Unmodified
<b>Isotype</b>	IgG
<b>Clonality</b>	Polyclonal
<b>Form</b>	Liquid
<b>Storage</b>	Store at 4°C short term. Aliquot and store at -20°C long term. Avoid freeze/thaw cycles.
<b>Buffer</b>	Liquid in PBS containing 50% glycerol, 0.5% BSA and 0.02% New type preservative N.
<b>Purification</b>	Affinity purification

## Immunogen

<b>Gene Name</b>	HNRNPUL2
<b>Alternative Names</b>	HNRNPUL2; HNRPUL2; Heterogeneous nuclear ribonucleoprotein U-like protein 2; Scaffold-attachment factor A2; SAF-A2
<b>Gene ID</b>	221092.0
<b>SwissProt ID</b>	Q1KMD3.The antiserum was produced against synthesized peptide derived from human HNRNPUL2. AA range:601-650

## Application

<b>Dilution Ratio</b>	WB 1:500 - 1:2000. IHC 1:100 - 1:300. ELISA: 1:40000..
<b>Molecular Weight</b>	85kD

**Product Name: SAF-A2 Rabbit Polyclonal Antibody**  
**Catalog #: APRab17575**

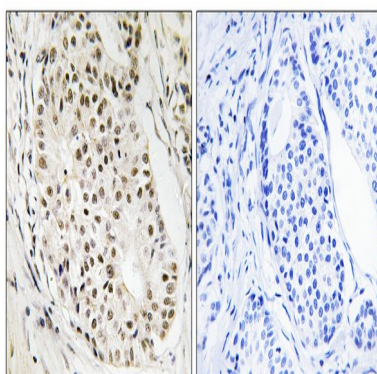


## Background

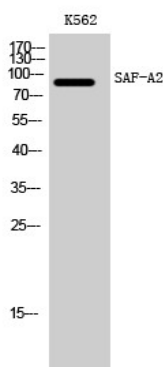
similarity:Contains 1 B30.2/SPRY domain.,similarity:Contains 1 SAP domain.,subunit:Binds to MLF1 and retains it in the nucleus.,similarity:Contains 1 B30.2/SPRY domain.,similarity:Contains 1 SAP domain.,subunit:Binds to MLF1 and retains it in the nucleus.,

## Research Area

## Image Data



Immunohistochemistry analysis of paraffin-embedded human breast carcinoma tissue, using HNRNPUL2 Antibody. The picture on the right is blocked with the synthesized peptide.



Western Blot analysis of K562 cells using SAF-A2 Polyclonal Antibody cells nucleus extracted by Minute TM Cytoplasmic and Nuclear Fractionation kit (SC-003, Invent biotech, MN, USA) .

## Note

For research use only.