

Product Name: SAA4 Rabbit Polyclonal Antibody
Catalog #: APRab17568



Summary

Production Name	SAA4 Rabbit Polyclonal Antibody
Description	Rabbit Polyclonal Antibody
Host	Rabbit
Application	IHC,ELISA
Reactivity	Human,Rat,Mouse

Performance

Conjugation	Unconjugated
Modification	Unmodified
Isotype	IgG
Clonality	Polyclonal
Form	Liquid
Storage	Store at 4°C short term. Aliquot and store at -20°C long term. Avoid freeze/thaw cycles.
Buffer	Liquid in PBS containing 50% glycerol, 0.5% BSA and 0.02% New type preservative N.
Purification	Affinity purification

Immunogen

Gene Name	SAA4
Alternative Names	SAA4; CSAA; Serum amyloid A-4 protein; Constitutively expressed serum amyloid A protein; C-SAA
Gene ID	6291.0
SwissProt ID	P35542.The antiserum was produced against synthesized peptide derived from human SAA4. AA range:81-130

Application

Dilution Ratio	IHC 1:100-1:300 ELISA: 1:40000
Molecular Weight	

Background

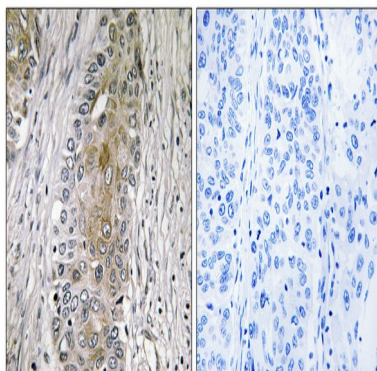
Product Name: SAA4 Rabbit Polyclonal Antibody
Catalog #: APRab17568



function:Major acute phase reactant. Apolipoprotein of the HDL complex.,induction:Constitutively expressed.,similarity:Belongs to the SAA family.,tissue specificity:Expressed by the liver; secreted in plasma.,function:Major acute phase reactant. Apolipoprotein of the HDL complex.,induction:Constitutively expressed.,similarity:Belongs to the SAA family.,tissue specificity:Expressed by the liver; secreted in plasma.,

Research Area

Image Data



Immunohistochemistry analysis of paraffin-embedded human lung carcinoma, using SAA4 Antibody. The picture on the right is blocked with the synthesized peptide.

Note

For research use only.