

Product Name: RRS1 Rabbit Polyclonal Antibody
Catalog #: APRab17391



Summary

Production Name	RRS1 Rabbit Polyclonal Antibody
Description	Rabbit Polyclonal Antibody
Host	Rabbit
Application	WB,
Reactivity	Human,Mouse,Rat

Performance

Conjugation	Unconjugated
Modification	Unmodified
Isotype	IgG
Clonality	Polyclonal
Form	Liquid
Storage	Store at 4°C short term. Aliquot and store at -20°C long term. Avoid freeze/thaw cycles.
Buffer	Liquid in PBS containing 50% glycerol, 0.5% BSA and 0.02% New type preservative N.
Purification	Affinity purification

Immunogen

Gene Name	RRS1
Alternative Names	RRS1; KIAA0112; RRR; Ribosome biogenesis regulatory protein homolog
Gene ID	23212.0
SwissProt ID	Q15050.The antiserum was produced against synthesized peptide derived from human RRS1. AA range:254-303

Application

Dilution Ratio	WB 1:500 - 1:2000. ELISA: 1:10000..
Molecular Weight	41kD

Background

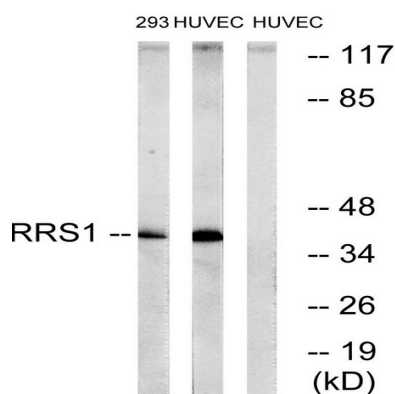
Product Name: RRS1 Rabbit Polyclonal Antibody
Catalog #: AP Rab17391



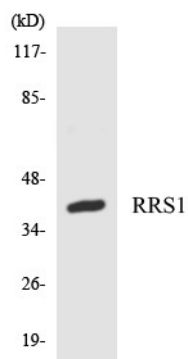
function:Involved in ribosome biogenesis.,similarity:Belongs to the RRS1 family.,function:Involved in ribosome biogenesis.,similarity:Belongs to the RRS1 family.,

Research Area

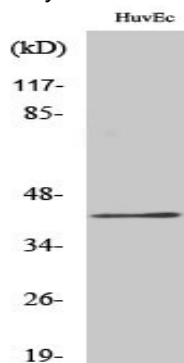
Image Data



Western blot analysis of lysates from HUVEC and 293 cells, using RRS1 Antibody. The lane on the right is blocked with the synthesized peptide.



Western blot analysis of the lysates from HT-29 cells using RRS1 antibody.

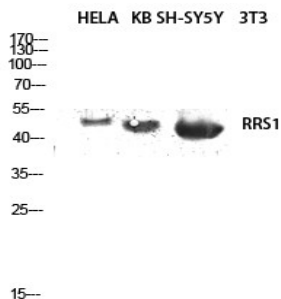


Western Blot analysis of various cells using RRS1 Polyclonal Antibody diluted at 1: 2000 cells nucleus extracted by Minute

Product Name: RRS1 Rabbit Polyclonal Antibody
Catalog #: APRab17391



TM Cytoplasmic and Nuclear Fractionation kit (SC-003, Invent biotech, MN, USA) .



Western blot analysis of HELA KB SH-SY5Y lysis using RRS1 antibody. Antibody was diluted at 1:2000 cells nucleus extracted by Minute TM Cytoplasmic and Nuclear Fractionation kit (SC-003, Invent biotech, MN, USA) .

Note

For research use only.