

Product Name: RM53 Rabbit Polyclonal Antibody
Catalog #: APRab17248



Summary

Production Name	RM53 Rabbit Polyclonal Antibody
Description	Rabbit Polyclonal Antibody
Host	Rabbit
Application	WB
Reactivity	Human,Mouse

Performance

Conjugation	Unconjugated
Modification	Unmodified
Isotype	IgG
Clonality	Polyclonal
Form	Liquid
Storage	Store at 4°C short term. Aliquot and store at -20°C long term. Avoid freeze/thaw cycles.
Buffer	Liquid in PBS containing 50% glycerol, and 0.02% New type preservative N.
Purification	Affinity purification

Immunogen

Gene Name	MRPL53
Alternative Names	
Gene ID	116540.0
SwissProt ID	Q96EL3.Synthesized peptide derived from human protein . at AA range: 30-110

Application

Dilution Ratio	WB 1:500-2000 ELISA 1:5000-20000
Molecular Weight	12kD

Background

Mammalian mitochondrial ribosomal proteins are encoded by nuclear genes and help in protein synthesis within the mitochondrion. Mitochondrial ribosomes (mitoribosomes) consist of a small 28S subunit and a large 39S subunit. They

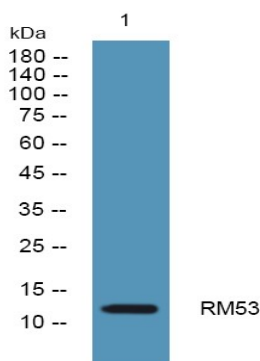
Product Name: RM53 Rabbit Polyclonal Antibody
Catalog #: APRab17248



have an estimated 75% protein to rRNA composition compared to prokaryotic ribosomes, where this ratio is reversed. Another difference between mammalian mitoribosomes and prokaryotic ribosomes is that the latter contain a 5S rRNA. Among different species, the proteins comprising the mitoribosome differ greatly in sequence, and sometimes in biochemical properties, which prevents easy recognition by sequence homology. This gene encodes a 39S subunit protein. A pseudogene corresponding to this gene is found on chromosome 1p. [provided by RefSeq, Jul 2008],

Research Area

Image Data



Western blot analysis of lysates from DU145 cells, primary antibody was diluted at 1:1000, 4°over night

Note

For research use only.