

Product Name: RM23 Rabbit Polyclonal Antibody
Catalog #: APRab17239



Summary

Production Name	RM23 Rabbit Polyclonal Antibody
Description	Rabbit Polyclonal Antibody
Host	Rabbit
Application	WB
Reactivity	Human,Rat,Mouse

Performance

Conjugation	Unconjugated
Modification	Unmodified
Isotype	IgG
Clonality	Polyclonal
Form	Liquid
Storage	Store at 4°C short term. Aliquot and store at -20°C long term. Avoid freeze/thaw cycles.
Buffer	Liquid in PBS containing 50% glycerol, and 0.02% New type preservative N.
Purification	Affinity purification

Immunogen

Gene Name	MRPL23 L23MRP RPL23L
Alternative Names	
Gene ID	6150.0
SwissProt ID	Q16540.Synthesized peptide derived from human protein . at AA range: 40-120

Application

Dilution Ratio	WB 1:500-2000 ELISA 1:5000-20000
Molecular Weight	16kD

Background

Mammalian mitochondrial ribosomal proteins are encoded by nuclear genes and help in protein synthesis within the mitochondrion. Mitochondrial ribosomes (mitoribosomes) consist of a small 28S subunit and a large 39S subunit. They

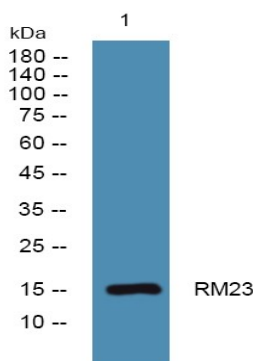
Product Name: RM23 Rabbit Polyclonal Antibody
Catalog #: APRab17239



have an estimated 75% protein to rRNA composition compared to prokaryotic ribosomes, where this ratio is reversed. Another difference between mammalian mitoribosomes and prokaryotic ribosomes is that the latter contain a 5S rRNA. Among different species, the proteins comprising the mitoribosome differ greatly in sequence, and sometimes in biochemical properties, which prevents easy recognition by sequence homology. This gene encodes a 39S subunit protein. The gene is biallelically expressed, despite its location within a region of imprinted genes on chromosome 11. [provided by RefSeq, Jul 2008],similarity:Belongs to the ribosomal protein L23P family.,

Research Area

Image Data



Western blot analysis of lysates from A431 cells, primary antibody was diluted at 1:1000, 4°over night

Note

For research use only.