

Product Name: RM19 Rabbit Polyclonal Antibody
Catalog #: APRab17238



Summary

Production Name	RM19 Rabbit Polyclonal Antibody
Description	Rabbit Polyclonal Antibody
Host	Rabbit
Application	WB
Reactivity	Human,Mouse

Performance

Conjugation	Unconjugated
Modification	Unmodified
Isotype	IgG
Clonality	Polyclonal
Form	Liquid
Storage	Store at 4°C short term. Aliquot and store at -20°C long term. Avoid freeze/thaw cycles.
Buffer	Liquid in PBS containing 50% glycerol, and 0.02% New type preservative N.
Purification	Affinity purification

Immunogen

Gene Name	MRPL19 KIAA0104 MRPL15
Alternative Names	
Gene ID	9801.0
SwissProt ID	P49406.Synthesized peptide derived from human protein . at AA range: 160-240

Application

Dilution Ratio	WB 1:500-2000 ELISA 1:5000-20000
Molecular Weight	32kD

Background

Mammalian mitochondrial ribosomal proteins are encoded by nuclear genes and help in protein synthesis within the mitochondrion. Mitochondrial ribosomes (mitoribosomes) consist of a small 28S subunit and a large 39S subunit. They

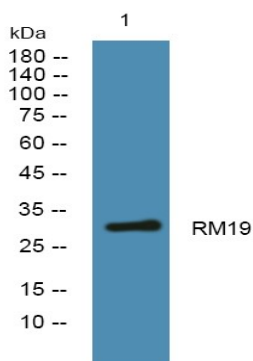
Product Name: RM19 Rabbit Polyclonal Antibody
Catalog #: APRab17238



have an estimated 75% protein to rRNA composition compared to prokaryotic ribosomes, where this ratio is reversed. Another difference between mammalian mitoribosomes and prokaryotic ribosomes is that the latter contain a 5S rRNA. Among different species, the proteins comprising the mitoribosome differ greatly in sequence, and sometimes in biochemical properties, which prevents easy recognition by sequence homology. This gene encodes a 39S subunit protein. [provided by RefSeq, Jul 2008],similarity:Belongs to the ribosomal protein L19P family.,

Research Area

Image Data



Western blot analysis of lysates from SH-SY5Y cells, primary antibody was diluted at 1:1000, 4°over night

Note

For research use only.