

Product Name: Ribosomal Protein S5 Rabbit Polyclonal Antibody
Catalog #: APRab17188



Summary

Production Name	Ribosomal Protein S5 Rabbit Polyclonal Antibody
Description	Rabbit Polyclonal Antibody
Host	Rabbit
Application	WB
Reactivity	Human,Mouse,Rat

Performance

Conjugation	Unconjugated
Modification	Unmodified
Isotype	IgG
Clonality	Polyclonal
Form	Liquid
Storage	Store at 4°C short term. Aliquot and store at -20°C long term. Avoid freeze/thaw cycles.
Buffer	Liquid in PBS containing 50% glycerol, 0.5% BSA and 0.02% New type preservative N.
Purification	Affinity purification

Immunogen

Gene Name	RPS5
Alternative Names	RPS5; 40S ribosomal protein S5
Gene ID	6193.0
SwissProt ID	P46782.Synthesized peptide derived from Ribosomal Protein S5 . at AA range: 60-140

Application

Dilution Ratio	WB 1:500-2000 ELISA 2000-20000
Molecular Weight	22kD

Background

Ribosomes, the organelles that catalyze protein synthesis, consist of a small 40S subunit and a large 60S subunit. Together

Product Name: Ribosomal Protein S5 Rabbit Polyclonal Antibody
Catalog #: APRab17188

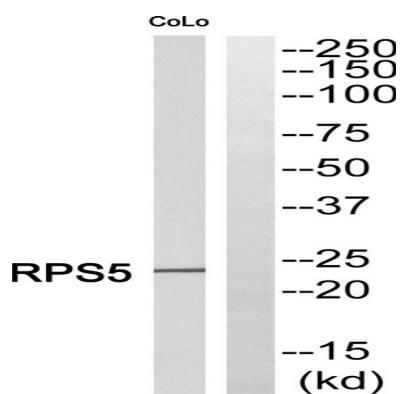


these subunits are composed of 4 RNA species and approximately 80 structurally distinct proteins. This gene encodes a ribosomal protein that is a component of the 40S subunit. The protein belongs to the S7P family of ribosomal proteins. It is located in the cytoplasm. Variable expression of this gene in colorectal cancers compared to adjacent normal tissues has been observed, although no correlation between the level of expression and the severity of the disease has been found. As is typical for genes encoding ribosomal proteins, there are multiple processed pseudogenes of this gene dispersed through the genome. [provided by RefSeq, Jul 2008],similarity:Belongs to the ribosomal protein S7P family.,

Research Area

Ribosome;

Image Data



Western blot analysis of RPS5 Antibody. The lane on the right is blocked with the RPS5 peptide.

Note

For research use only.