

**Product Name: Ribosomal Protein S4Y1 Rabbit Polyclonal Antibody**  
**Catalog #: APRab17187**

---

## Summary

<b>Production Name</b>	Ribosomal Protein S4Y1 Rabbit Polyclonal Antibody
<b>Description</b>	Rabbit Polyclonal Antibody
<b>Host</b>	Rabbit
<b>Application</b>	IF, WB, IHC, ELISA
<b>Reactivity</b>	Human, Rat, Mouse

## Performance

<b>Conjugation</b>	Unconjugated
<b>Modification</b>	Unmodified
<b>Isotype</b>	IgG
<b>Clonality</b>	Polyclonal
<b>Form</b>	Liquid
<b>Storage</b>	Store at 4°C short term. Aliquot and store at -20°C long term. Avoid freeze/thaw cycles.
<b>Buffer</b>	Liquid in PBS containing 50% glycerol, 0.5% BSA and 0.02% New type preservative N.
<b>Purification</b>	Affinity purification

## Immunogen

<b>Gene Name</b>	RPS4Y1
<b>Alternative Names</b>	RPS4Y1; RPS4Y; 40S ribosomal protein S4; Y isoform 1
<b>Gene ID</b>	6192.0
<b>SwissProt ID</b>	P22090. The antiserum was produced against synthesized peptide derived from human RPS4Y1. AA range: 214-263

## Application

<b>Dilution Ratio</b>	WB 1:500 - 1:2000. IHC 1:100 - 1:300. IF 1:200 - 1:1000. ELISA: 1:20000. Not yet tested in other applications.
<b>Molecular Weight</b>	29kD

**Product Name: Ribosomal Protein S4Y1 Rabbit  
Polyclonal Antibody  
Catalog #: APRab17187**

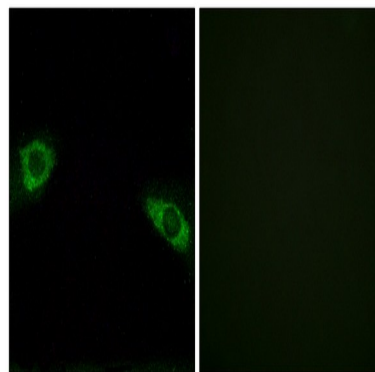
## Background

Cytoplasmic ribosomes, organelles that catalyze protein synthesis, consist of a small 40S subunit and a large 60S subunit. Together these subunits are composed of 4 RNA species and approximately 80 structurally distinct proteins. This gene encodes ribosomal protein S4, a component of the 40S subunit. Ribosomal protein S4 is the only ribosomal protein known to be encoded by more than one gene, namely this gene and ribosomal protein S4, X-linked (RPS4X). The 2 isoforms encoded by these genes are not identical, but are functionally equivalent. Ribosomal protein S4 belongs to the S4E family of ribosomal proteins. It has been suggested that haploinsufficiency of the ribosomal protein S4 genes plays a role in Turner syndrome; however, this hypothesis is controversial. As is typical for genes encoding ribosomal proteins, there are multiple processed pseudogenes of this gene dispersed throughout the genome. This isoform is encoded on the Y chromosome. Similarity: Belongs to the ribosomal protein S4e family. Similarity: Contains 1 S4 RNA-binding domain.

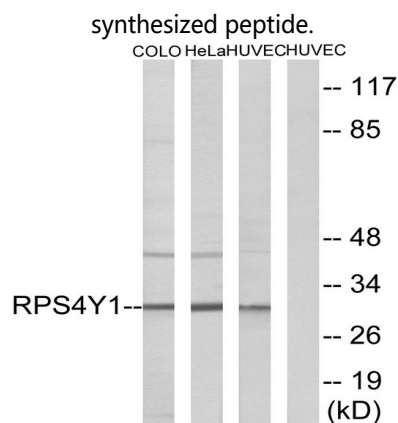
## Research Area

Ribosome;

## Image Data



Immunofluorescence analysis of HUVEC cells, using RPS4Y1 Antibody. The picture on the right is blocked with the

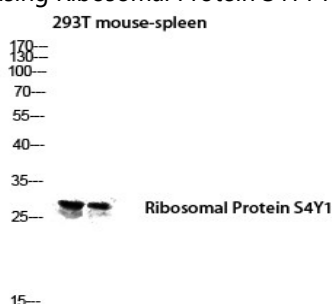


**Product Name: Ribosomal Protein S4Y1 Rabbit  
Polyclonal Antibody  
Catalog #: APRab17187**

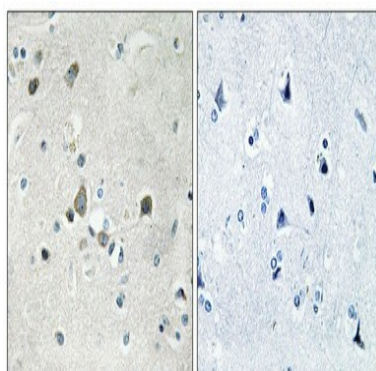
Western blot analysis of lysates from HUVEC, HeLa, and COLO cells, using RPS4Y1 Antibody. The lane on the right is blocked with the synthesized peptide.



Western Blot analysis of various cells using Ribosomal Protein S4Y1 Polyclonal Antibody diluted at 1: 1000



Western blot analysis of 293T mouse-spleen lysis using Ribosomal Protein S4Y1 antibody. Antibody was diluted at 1:1000



Immunohistochemical analysis of paraffin-embedded Human brain. Antibody was diluted at 1:100 (4°, overnight) . High-pressure and temperature Tris-EDTA, pH 8.0 was used for antigen retrieval. Negative control (right) obtained from antibody was pre-absorbed by immunogen peptide.

**Note**

For research use only.

**Product Name: Ribosomal Protein S4Y1 Rabbit  
Polyclonal Antibody  
Catalog #: APRab17187**

---

