

Product Name: Ribosomal Protein S2 Rabbit Polyclonal Antibody
Catalog #: APRab17179



Summary

Production Name	Ribosomal Protein S2 Rabbit Polyclonal Antibody
Description	Rabbit Polyclonal Antibody
Host	Rabbit
Application	WB
Reactivity	Human,Mouse,Rat

Performance

Conjugation	Unconjugated
Modification	Unmodified
Isotype	IgG
Clonality	Polyclonal
Form	Liquid
Storage	Store at 4°C short term. Aliquot and store at -20°C long term. Avoid freeze/thaw cycles.
Buffer	Liquid in PBS containing 50% glycerol, 0.5% BSA and 0.02% New type preservative N.
Purification	Affinity purification

Immunogen

Gene Name	RPS2
Alternative Names	RPS2; RPS4; 40S ribosomal protein S2; 40S ribosomal protein S4; Protein LLRep3
Gene ID	6187.0
SwissProt ID	P15880.The antiserum was produced against synthesized peptide derived from human RPS2. AA range:244-293

Application

Dilution Ratio	WB 1:500-2000 ELISA 2000-20000
Molecular Weight	31kD

Background

Product Name: Ribosomal Protein S2 Rabbit Polyclonal Antibody
Catalog #: AP Rab17179

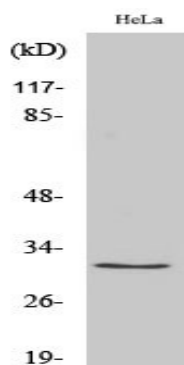


Ribosomes, the organelles that catalyze protein synthesis, consist of a small 40S subunit and a large 60S subunit. Together these subunits are composed of 4 RNA species and approximately 80 structurally distinct proteins. This gene encodes a ribosomal protein that is a component of the 40S subunit. The protein belongs to the S5P family of ribosomal proteins. It is located in the cytoplasm. This gene shares sequence similarity with mouse LLRep3. It is co-transcribed with the small nucleolar RNA gene U64, which is located in its third intron. As is typical for genes encoding ribosomal proteins, there are multiple processed pseudogenes of this gene dispersed through the genome. [provided by RefSeq, Jul 2008],similarity:Belongs to the ribosomal protein S5P family.,similarity:Contains 1 S5 DRBM domain.,

Research Area

Ribosome;

Image Data



Western Blot analysis of various cells using Ribosomal Protein S2 Polyclonal Antibody diluted at 1: 2000

Note

For research use only.