

**Product Name: Ribosomal Protein L3L Rabbit Polyclonal Antibody**  
**Catalog #: APRab17166**

---

## Summary

<b>Production Name</b>	Ribosomal Protein L3L Rabbit Polyclonal Antibody
<b>Description</b>	Rabbit Polyclonal Antibody
<b>Host</b>	Rabbit
<b>Application</b>	IF,ELISA
<b>Reactivity</b>	Human,Rat,Mouse

## Performance

<b>Conjugation</b>	Unconjugated
<b>Modification</b>	Unmodified
<b>Isotype</b>	IgG
<b>Clonality</b>	Polyclonal
<b>Form</b>	Liquid
<b>Storage</b>	Store at 4°C short term. Aliquot and store at -20°C long term. Avoid freeze/thaw cycles.
<b>Buffer</b>	Liquid in PBS containing 50% glycerol, 0.5% BSA and 0.02% New type preservative N.
<b>Purification</b>	Affinity purification

## Immunogen

<b>Gene Name</b>	RPL3L
<b>Alternative Names</b>	RPL3L; 60S ribosomal protein L3-like
<b>Gene ID</b>	6123.0
<b>SwissProt ID</b>	Q92901.The antiserum was produced against synthesized peptide derived from human RPL3L. AA range:211-260

## Application

<b>Dilution Ratio</b>	IF 1:200-1:1000. ELISA: 1:40000.
<b>Molecular Weight</b>	

## Background

---

**Product Name: Ribosomal Protein L3L Rabbit Polyclonal Antibody**  
**Catalog #: APRab17166**

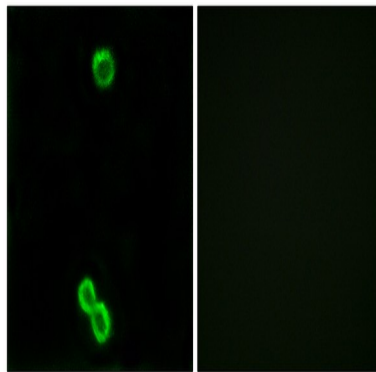
---

This gene encodes a protein that shares sequence similarity with ribosomal protein L3. The protein belongs to the L3P family of ribosomal proteins. Unlike the ubiquitous expression of ribosomal protein genes, this gene has a tissue-specific pattern of expression, with the highest levels of expression in skeletal muscle and heart. It is not currently known whether the encoded protein is a functional ribosomal protein or whether it has evolved a function that is independent of the ribosome. [provided by RefSeq, Jul 2008],similarity:Belongs to the ribosomal protein L3P family.,

## Research Area

Ribosome;

## Image Data



Immunofluorescence analysis of MCF7 cells, using RPL3L Antibody. The picture on the right is blocked with the synthesized peptide.

## Note

For research use only.