

Product Name: Ribosomal Protein L37 Rabbit Polyclonal Antibody
Catalog #: APRab17162

Summary

| | |
|------------------------|--|
| Production Name | Ribosomal Protein L37 Rabbit Polyclonal Antibody |
| Description | Rabbit Polyclonal Antibody |
| Host | Rabbit |
| Application | IHC,ELISA |
| Reactivity | Human,Mouse,Rat |

Performance

| | |
|---------------------|--|
| Conjugation | Unconjugated |
| Modification | Unmodified |
| Isotype | IgG |
| Clonality | Polyclonal |
| Form | Liquid |
| Storage | Store at 4°C short term. Aliquot and store at -20°C long term. Avoid freeze/thaw cycles. |
| Buffer | Liquid in PBS containing 50% glycerol, 0.5% BSA and 0.02% New type preservative N. |
| Purification | Affinity purification |

Immunogen

| | |
|--------------------------|--|
| Gene Name | RPL37 |
| Alternative Names | RPL37; 60S ribosomal protein L37; G1.16 |
| Gene ID | 6167.0 |
| SwissProt ID | P61927.The antiserum was produced against synthesized peptide derived from human RPL37. AA range:21-70 |

Application

| | |
|-------------------------|--------------------------------|
| Dilution Ratio | IHC 1:100-1:300 ELISA: 1:10000 |
| Molecular Weight | |

Background

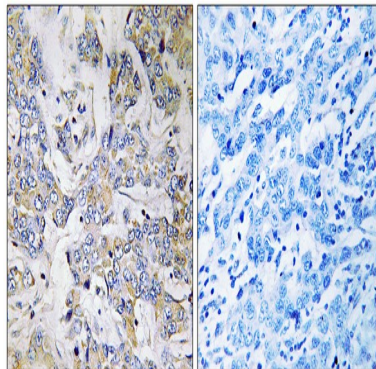
Product Name: Ribosomal Protein L37 Rabbit Polyclonal Antibody
Catalog #: APRab17162

Ribosomes, the organelles that catalyze protein synthesis, consist of a small 40S subunit and a large 60S subunit. Together these subunits are composed of 4 RNA species and approximately 80 structurally distinct proteins. This gene encodes a ribosomal protein that is a component of the 60S subunit. The protein belongs to the L37E family of ribosomal proteins. It is located in the cytoplasm. The protein contains a C2C2-type zinc finger-like motif. As is typical for genes encoding ribosomal proteins, there are multiple processed pseudogenes of this gene dispersed through the genome. [provided by RefSeq, Jul 2008],cofactor: Binds 1 zinc ion per subunit.,function: Binds to the 23S rRNA.,similarity: Belongs to the ribosomal protein L37e family.,

Research Area

Ribosome;

Image Data



Immunohistochemistry analysis of paraffin-embedded human breast carcinoma tissue, using RPL37 Antibody. The picture on the right is blocked with the synthesized peptide.

Note

For research use only.