

Product Name: Ribosomal Protein L36 Rabbit Polyclonal Antibody
Catalog #: APRab17161

Summary

Production Name	Ribosomal Protein L36 Rabbit Polyclonal Antibody
Description	Rabbit Polyclonal Antibody
Host	Rabbit
Application	IF,IHC,WB,ELISA
Reactivity	Human,Mouse,Rat

Performance

Conjugation	Unconjugated
Modification	Unmodified
Isotype	IgG
Clonality	Polyclonal
Form	Liquid
Storage	Store at 4°C short term. Aliquot and store at -20°C long term. Avoid freeze/thaw cycles.
Buffer	Liquid in PBS containing 50% glycerol, 0.5% BSA and 0.02% New type preservative N.
Purification	Affinity purification

Immunogen

Gene Name	RPL36
Alternative Names	RPL36; 60S ribosomal protein L36
Gene ID	25873.0
SwissProt ID	Q9Y3U8.The antiserum was produced against synthesized peptide derived from human RPL36. AA range:51-100

Application

Dilution Ratio	WB 1:500 - 1:2000. IHC 1:100 - 1:300. IF 1:200 - 1:1000. ELISA: 1:40000. Not yet tested in other applications.
Molecular Weight	12kD

Product Name: Ribosomal Protein L36 Rabbit Polyclonal Antibody
Catalog #: APRab17161

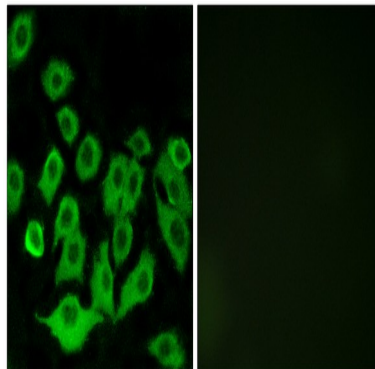
Background

Ribosomes, the organelles that catalyze protein synthesis, consist of a small 40S subunit and a large 60S subunit. Together these subunits are composed of 4 RNA species and approximately 80 structurally distinct proteins. This gene encodes a ribosomal protein that is a component of the 60S subunit. The protein belongs to the L36E family of ribosomal proteins. It is located in the cytoplasm. Transcript variants derived from alternative splicing exist; they encode the same protein. As is typical for genes encoding ribosomal proteins, there are multiple processed pseudogenes of this gene dispersed through the genome. [provided by RefSeq, Jul 2008],caution:Could be the product of a pseudogene.,similarity:Belongs to the ribosomal protein L36e family.,

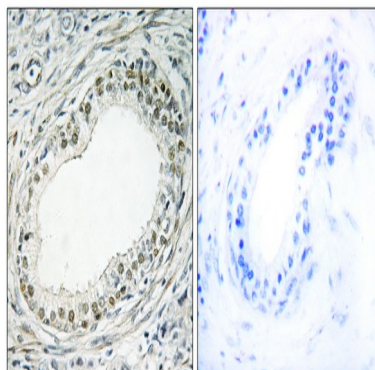
Research Area

Ribosome;

Image Data

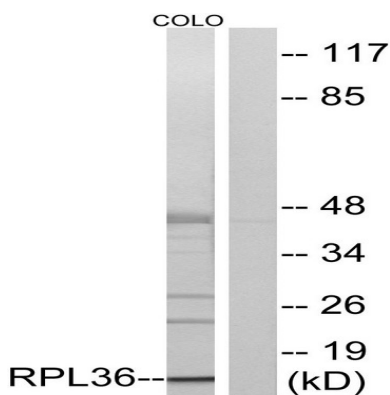


Immunofluorescence analysis of A549 cells, using RPL36 Antibody. The picture on the right is blocked with the synthesized peptide.

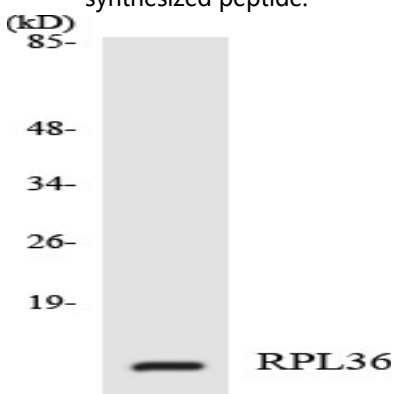


Immunohistochemistry analysis of paraffin-embedded human prostate carcinoma tissue, using RPL36 Antibody. The picture on the right is blocked with the synthesized peptide.

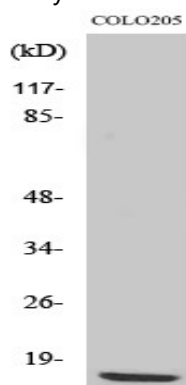
Product Name: Ribosomal Protein L36 Rabbit Polyclonal Antibody
Catalog #: APRab17161



Western blot analysis of lysates from COLO cells, using RPL36 Antibody. The lane on the right is blocked with the synthesized peptide.



Western blot analysis of the lysates from 293 cells using RPL36 antibody.



Western Blot analysis of various cells using Ribosomal Protein L36 Polyclonal Antibody diluted at 1: 500

Note

For research use only.