

Product Name: Ribosomal Protein L34 Rabbit Polyclonal Antibody
Catalog #: APRab17159

Summary

Production Name	Ribosomal Protein L34 Rabbit Polyclonal Antibody
Description	Rabbit Polyclonal Antibody
Host	Rabbit
Application	IF, WB, IHC
Reactivity	Human, Mouse, Rat

Performance

Conjugation	Unconjugated
Modification	Unmodified
Isotype	IgG
Clonality	Polyclonal
Form	Liquid
Storage	Store at 4°C short term. Aliquot and store at -20°C long term. Avoid freeze/thaw cycles.
Buffer	Liquid in PBS containing 50% glycerol, 0.5% BSA and 0.02% New type preservative N.
Purification	Affinity purification

Immunogen

Gene Name	RPL34
Alternative Names	RPL34; 60S ribosomal protein L34
Gene ID	6164.0
SwissProt ID	P49207. The antiserum was produced against synthesized peptide derived from human RPL34. AA range: 41-90

Application

Dilution Ratio	WB 1:500 - 1:2000. IHC 1:100 - 1:300. IF 1:200 - 1:1000. ELISA: 1:20000. Not yet tested in other applications.
Molecular Weight	13kD

Product Name: Ribosomal Protein L34 Rabbit Polyclonal Antibody
Catalog #: APRab17159

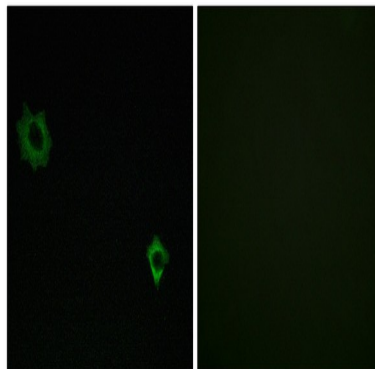
Background

Ribosomes, the organelles that catalyze protein synthesis, consist of a small 40S subunit and a large 60S subunit. Together these subunits are composed of 4 RNA species and approximately 80 structurally distinct proteins. This gene encodes a ribosomal protein that is a component of the 60S subunit. The protein belongs to the L34E family of ribosomal proteins. It is located in the cytoplasm. This gene originally was thought to be located at 17q21, but it has been mapped to 4q. Overexpression of this gene has been observed in some cancer cells. Alternative splicing results in multiple transcript variants, all encoding the same isoform. As is typical for genes encoding ribosomal proteins, there are multiple processed pseudogenes of this gene dispersed through the genome. [provided by RefSeq, Feb 2016],similarity:Belongs to the ribosomal protein L34e family.,

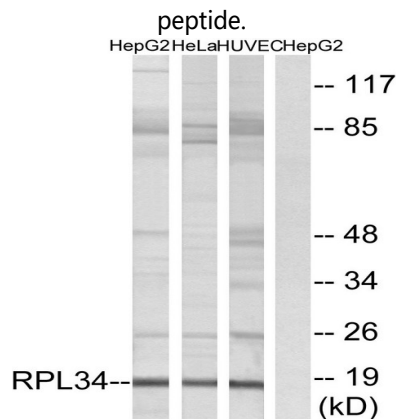
Research Area

Ribosome;

Image Data



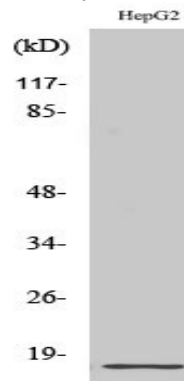
Immunofluorescence analysis of HUVEC cells, using RPL34 Antibody. The picture on the right is blocked with the synthesized



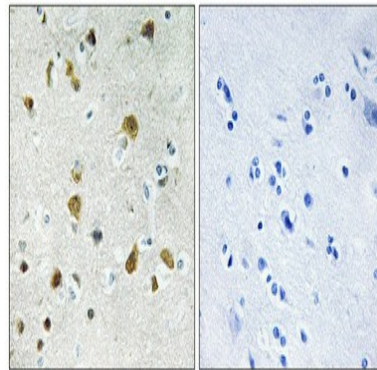
Western blot analysis of lysates from HepG2, HeLa, and HUVEC cells, using RPL34 Antibody. The lane on the right is blocked

Product Name: Ribosomal Protein L34 Rabbit Polyclonal Antibody
Catalog #: APRab17159

with the synthesized peptide.



Western Blot analysis of various cells using Ribosomal Protein L34 Polyclonal Antibody diluted at 1: 500



Immunohistochemical analysis of paraffin-embedded Human brain. Antibody was diluted at 1:100 (4°,overnight) . High-pressure and temperature Tris-EDTA,pH8.0 was used for antigen retrieval. Negative contrl (right) obtained from antibody was pre-absorbed by immunogen peptide.

Note

For research use only.