

**Product Name: Ribosomal Protein L3 Rabbit Polyclonal Antibody**  
**Catalog #: APRab17156**

---



## Summary

<b>Production Name</b>	Ribosomal Protein L3 Rabbit Polyclonal Antibody
<b>Description</b>	Rabbit Polyclonal Antibody
<b>Host</b>	Rabbit
<b>Application</b>	IHC, WB,
<b>Reactivity</b>	Human, Mouse, Rat

## Performance

<b>Conjugation</b>	Unconjugated
<b>Modification</b>	Unmodified
<b>Isotype</b>	IgG
<b>Clonality</b>	Polyclonal
<b>Form</b>	Liquid
<b>Storage</b>	Store at 4°C short term. Aliquot and store at -20°C long term. Avoid freeze/thaw cycles.
<b>Buffer</b>	Liquid in PBS containing 50% glycerol, 0.5% BSA and 0.02% New type preservative N.
<b>Purification</b>	Affinity purification

## Immunogen

<b>Gene Name</b>	RPL3
<b>Alternative Names</b>	RPL3; OK/SW-cl.32; 60S ribosomal protein L3; HIV-1 TAR RNA-binding protein B; TARBP-B
<b>Gene ID</b>	6122.0
<b>SwissProt ID</b>	P39023. The antiserum was produced against synthesized peptide derived from human RPL3. AA range: 211-260

## Application

<b>Dilution Ratio</b>	WB 1:500 - 1:2000. IHC 1:100 - 1:300. ELISA: 1:20000..
<b>Molecular Weight</b>	46kD

**Product Name: Ribosomal Protein L3 Rabbit Polyclonal Antibody**  
**Catalog #: AP Rab17156**

---



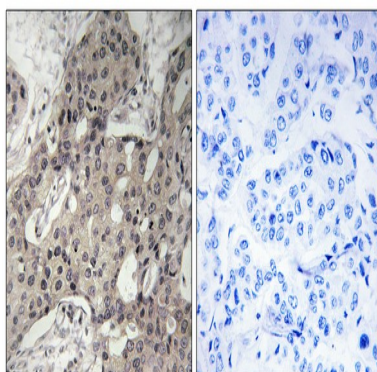
## Background

Ribosomes, the complexes that catalyze protein synthesis, consist of a small 40S subunit and a large 60S subunit. Together these subunits are composed of 4 RNA species and approximately 80 structurally distinct proteins. This gene encodes a ribosomal protein that is a component of the 60S subunit. The protein belongs to the L3P family of ribosomal proteins and it is located in the cytoplasm. The protein can bind to the HIV-1 TAR mRNA, and it has been suggested that the protein contributes to tat-mediated transactivation. This gene is co-transcribed with several small nucleolar RNA genes, which are located in several of this gene's introns. Alternate transcriptional splice variants, encoding different isoforms, have been characterized. As is typical for genes encoding ribosomal proteins, there are multiple processed pseudogenes of this gene dispersed through the genome. [provided by RefSeq, Jul2008] The sequence shown here is derived from an Ensembl automatic analysis pipeline and should be considered as preliminary data. The L3 protein is a component of the large subunit of cytoplasmic ribosomes. Belongs to the ribosomal protein L3P family.

## Research Area

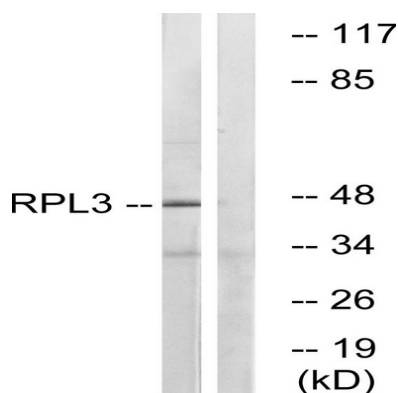
Ribosome;

## Image Data

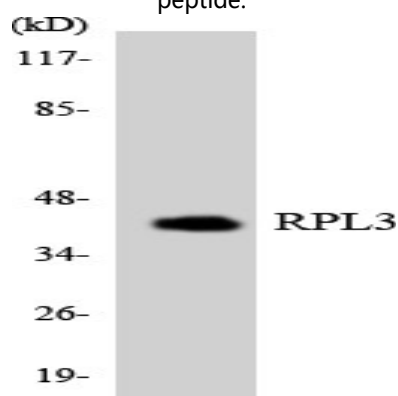


Immunohistochemistry analysis of paraffin-embedded human breast carcinoma tissue, using RPL3 Antibody. The picture on the right is blocked with the synthesized peptide.

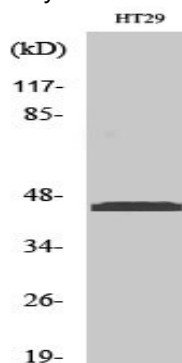
**Product Name: Ribosomal Protein L3 Rabbit Polyclonal Antibody**  
**Catalog #: APRab17156**



Western blot analysis of lysates from HT-29 cells, using RPL3 Antibody. The lane on the right is blocked with the synthesized peptide.



Western blot analysis of the lysates from HUVECcells using RPL3 antibody.



Western Blot analysis of various cells using Ribosomal Protein L3 Polyclonal Antibody

## Note

For research use only.