

**Product Name: Rhophilin Rabbit Polyclonal Antibody**  
**Catalog #: APRab17135**



## Summary

<b>Production Name</b>	Rhophilin Rabbit Polyclonal Antibody
<b>Description</b>	Rabbit Polyclonal Antibody
<b>Host</b>	Rabbit
<b>Application</b>	WB,ELISA
<b>Reactivity</b>	Human,Rat,Mouse

## Performance

<b>Conjugation</b>	Unconjugated
<b>Modification</b>	Unmodified
<b>Isotype</b>	IgG
<b>Clonality</b>	Polyclonal
<b>Form</b>	Liquid
<b>Storage</b>	Store at 4°C short term. Aliquot and store at -20°C long term. Avoid freeze/thaw cycles.
<b>Buffer</b>	Liquid in PBS containing 50% glycerol, 0.5% BSA and 0.02% New type preservative N.
<b>Purification</b>	Affinity purification

## Immunogen

<b>Gene Name</b>	RHPN1
<b>Alternative Names</b>	RHPN1; KIAA1929; Rhophilin-1; GTP-Rho-binding protein 1
<b>Gene ID</b>	114822.0
<b>SwissProt ID</b>	Q8TCX5.The antiserum was produced against synthesized peptide derived from human RHPN1. AA range:474-523

## Application

<b>Dilution Ratio</b>	WB 1:500-2000 ELISA 2000-20000
<b>Molecular Weight</b>	100kD

## Background

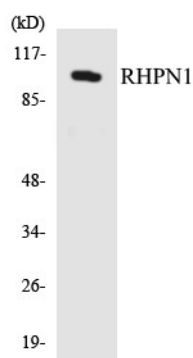
**Product Name: Rhophilin Rabbit Polyclonal Antibody**  
**Catalog #: APRab17135**



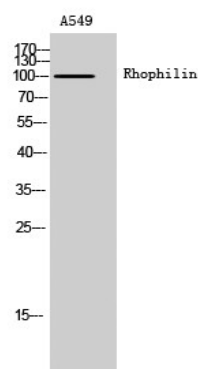
domain:The PDZ domain mediates interaction with ROPN1.,function:Has no enzymatic activity. May serve as a target for Rho, and interact with some cytoskeletal component upon Rho binding or relay a Rho signal to other molecules.,similarity:Belongs to the RHPN family.,similarity:Contains 1 BRO1 domain.,similarity:Contains 1 PDZ (DHR) domain.,similarity:Contains 1 REM (Hr1) repeat.,subunit:Binds specifically to GTP-Rho. Interacts with ROPN1.,domain:The PDZ domain mediates interaction with ROPN1.,function:Has no enzymatic activity. May serve as a target for Rho, and interact with some cytoskeletal component upon Rho binding or relay a Rho signal to other molecules.,similarity:Belongs to the RHPN family.,similarity:Contains 1 BRO1 domain.,similarity:Contains 1 PDZ (DHR) domain.,similarity:Contains 1 REM (Hr1) repeat.,subunit:Binds specifically to GTP-Rho. Interacts with ROPN1.,

## Research Area

## Image Data



Western blot analysis of the lysates from HepG2 cells using RHPN1 antibody.



Western Blot analysis of A549 cells using Rhophilin Polyclonal Antibody

## Note

For research use only.