

**Product Name: RGF1B Rabbit Polyclonal Antibody**  
**Catalog #: APRab17074**



## Summary

|                        |                                  |
|------------------------|----------------------------------|
| <b>Production Name</b> | RGF1B Rabbit Polyclonal Antibody |
| <b>Description</b>     | Rabbit Polyclonal Antibody       |
| <b>Host</b>            | Rabbit                           |
| <b>Application</b>     | WB                               |
| <b>Reactivity</b>      | Human,Mouse                      |

## Performance

|                     |  |
|---------------------|--|
| <b>Conjugation</b>  | Unconjugated   |
| <b>Modification</b> | Unmodified   |
| <b>Isotype</b>      | IgG  |
| <b>Clonality</b>    | Polyclonal   |
| <b>Form</b>         | Liquid   |
| <b>Storage</b>      | Store at 4°C short term. Aliquot and store at -20°C long term. Avoid freeze/thaw cycles. |
| <b>Buffer</b>       | Liquid in PBS containing 50% glycerol, and 0.02% New type preservative N.                |
| <b>Purification</b> | Affinity purification  |

## Immunogen

|                          |  |
|--------------------------|--|
| <b>Gene Name</b>         | RASGEF1B GPIG4   |
| <b>Alternative Names</b> |  |
| <b>Gene ID</b>           | 153020.0   |
| <b>SwissProt ID</b>      | Q0VAM2.Synthesized peptide derived from human protein . at AA range: 410-490 |

## Application

|                         |                                  |
|-------------------------|----------------------------------|
| <b>Dilution Ratio</b>   | WB 1:500-2000 ELISA 1:5000-20000 |
| <b>Molecular Weight</b> | 52kD                             |

## Background

function:Guanine nucleotide exchange factor (GEF) for Ras family proteins (in vitro).,induction:Up-regulated in monocytes stimulated with T.cruzi GPI-anchored mucins or bacterial lipopolysaccharide.,similarity:Contains 1 N-terminal Ras-GEF

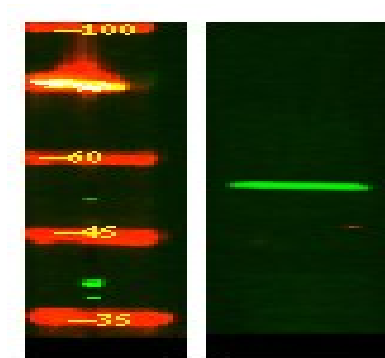
**Product Name: RGF1B Rabbit Polyclonal Antibody**  
**Catalog #: APRab17074**



domain.,similarity:Contains 1 Ras-GEF domain.,function:Guanine nucleotide exchange factor (GEF) for Ras family proteins (in vitro),,induction:Up-regulated in monocytes stimulated with T.cruzi GPI-anchored mucins or bacterial lipopolysaccharide.,similarity:Contains 1 N-terminal Ras-GEF domain.,similarity:Contains 1 Ras-GEF domain.,

## Research Area

## Image Data



Western Blot analysis of Hela lysis, using primary antibody at 1:1000 dilution. Secondary antibody was diluted at 1:10000

## Note

For research use only.