

**Product Name: RGAG1 Rabbit Polyclonal Antibody**  
**Catalog #: APRab17070**



## Summary

<b>Production Name</b>	RGAG1 Rabbit Polyclonal Antibody
<b>Description</b>	Rabbit Polyclonal Antibody
<b>Host</b>	Rabbit
<b>Application</b>	WB,ELISA
<b>Reactivity</b>	Human,Mouse

## Performance

<b>Conjugation</b>	Unconjugated
<b>Modification</b>	Unmodified
<b>Isotype</b>	IgG
<b>Clonality</b>	Polyclonal
<b>Form</b>	Liquid
<b>Storage</b>	Store at 4°C short term. Aliquot and store at -20°C long term. Avoid freeze/thaw cycles.
<b>Buffer</b>	Liquid in PBS containing 50% glycerol, 0.5% BSA and 0.02% New type preservative N.
<b>Purification</b>	Affinity purification

## Immunogen

<b>Gene Name</b>	RGAG1
<b>Alternative Names</b>	RGAG1; KIAA1318; Retrotransposon gag domain-containing protein 1; Tumor antigen BJ-HCC-23
<b>Gene ID</b>	57529.0
<b>SwissProt ID</b>	Q8NET4.The antiserum was produced against synthesized peptide derived from human RGAG1. AA range:1331-1380

## Application

<b>Dilution Ratio</b>	WB 1:500 - 1:2000. ELISA: 1:40000. Not yet tested in other applications.
<b>Molecular Weight</b>	144kD

**Product Name: RGAG1 Rabbit Polyclonal Antibody**  
**Catalog #: AP Rab17070**

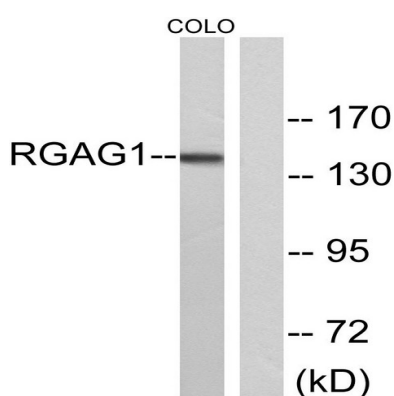


## Background

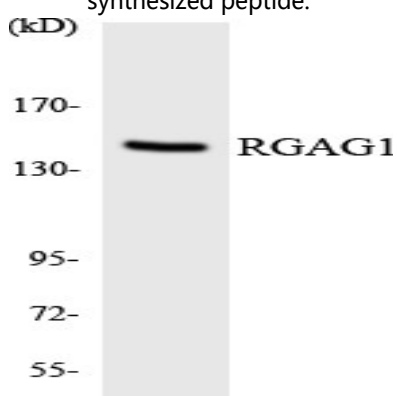
RGAG1 (Retrotransposon Gag Domain Containing 1) is a Protein Coding gene. Diseases associated with RGAG1 include non-syndromic x-linked intellectual disability.

## Research Area

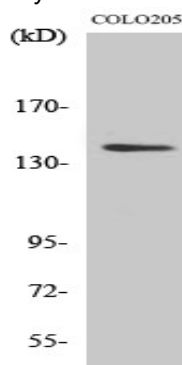
## Image Data



Western blot analysis of lysates from COLO cells, using RGAG1 Antibody. The lane on the right is blocked with the synthesized peptide.



Western blot analysis of the lysates from HT-29 cells using RGAG1 antibody.



**Product Name: RGAG1 Rabbit Polyclonal Antibody**  
**Catalog #: APRab17070**



---

Western Blot analysis of various cells using RGAG1 Polyclonal Antibody

**Note**

For research use only.