

Product Name: REXO1 Rabbit Polyclonal Antibody
Catalog #: APRab17042



Summary

Production Name	REXO1 Rabbit Polyclonal Antibody
Description	Rabbit Polyclonal Antibody
Host	Rabbit
Application	IHC,ELISA
Reactivity	Human,Rat,Mouse

Performance

Conjugation	Unconjugated
Modification	Unmodified
Isotype	IgG
Clonality	Polyclonal
Form	Liquid
Storage	Store at 4°C short term. Aliquot and store at -20°C long term. Avoid freeze/thaw cycles.
Buffer	Liquid in PBS containing 50% glycerol, 0.5% BSA and 0.02% New type preservative N.
Purification	Affinity purification

Immunogen

Gene Name	REXO1 REXO1; ELOABP1; KIAA1138; TCEB3BP1; RNA exonuclease 1 homolog; Elongin-A-binding protein 1; EloA-BP1; Transcription elongation factor B polypeptide 3-binding protein 1
Alternative Names	
Gene ID	57455.0
SwissProt ID	Q8N1G1.The antiserum was produced against synthesized peptide derived from human REXO1. AA range:185-234

Application

Dilution Ratio	IHC 1:100-1:300 ELISA: 1:20000
Molecular Weight	

Product Name: REXO1 Rabbit Polyclonal Antibody
Catalog #: APRab17042

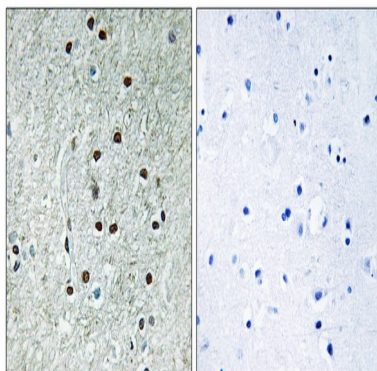


Background

function: Seems to have no detectable effect on transcription elongation in vitro., similarity: Belongs to the REXO1/REXO3 family., similarity: Contains 1 exonuclease domain., subunit: Interacts with TCEA2 and TCEB3., tissue specificity: Ubiquitously expressed., function: Seems to have no detectable effect on transcription elongation in vitro., similarity: Belongs to the REXO1/REXO3 family., similarity: Contains 1 exonuclease domain., subunit: Interacts with TCEA2 and TCEB3., tissue specificity: Ubiquitously expressed.,

Research Area

Image Data



Immunohistochemistry analysis of paraffin-embedded human brain, using REXO1 Antibody. The picture on the right is blocked with the synthesized peptide.

Note

For research use only.