

Product Name: RERG Rabbit Polyclonal Antibody
Catalog #: APRab17028



Summary

Production Name	RERG Rabbit Polyclonal Antibody
Description	Rabbit Polyclonal Antibody
Host	Rabbit
Application	IHC,ELISA
Reactivity	Human,Mouse

Performance

Conjugation	Unconjugated
Modification	Unmodified
Isotype	IgG
Clonality	Polyclonal
Form	Liquid
Storage	Store at 4°C short term. Aliquot and store at -20°C long term. Avoid freeze/thaw cycles.
Buffer	Liquid in PBS containing 50% glycerol, 0.5% BSA and 0.02% New type preservative N.
Purification	Affinity purification

Immunogen

Gene Name	RERG
Alternative Names	RERG; Ras-related and estrogen-regulated growth inhibitor
Gene ID	85004.0
SwissProt ID	Q96A58.Synthesized peptide derived from RERG . at AA range: 70-150

Application

Dilution Ratio IHC 1:100-1:300 ELISA: 1:5000

Molecular Weight

Background

RERG, a member of the RAS superfamily of GTPases, inhibits cell proliferation and tumor formation (Finlin et al., 2001 [PubMed 11533059]).[supplied by OMIM, Mar 2009],disease:Loss of RERG expression may contribute to tumorigenesis in

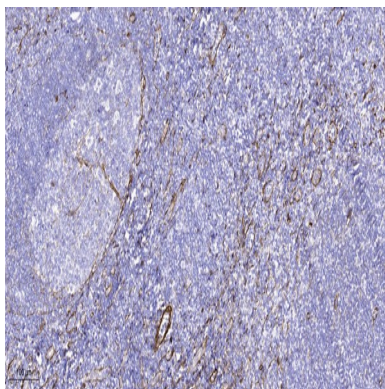
Product Name: RERG Rabbit Polyclonal Antibody
Catalog #: APRab17028



breast. RERG expression is decreased or lost in a significant proportion of primary breast tumors with poor clinical prognosis. High expression of RERG correlates with long relapse-free survival times.,function: Binds GDP/GTP and possesses intrinsic GTPase activity. Has higher affinity for GDP than for GTP. In cell lines overexpression leads to a reduction in the rate of proliferation, colony formation and in tumorigenic potential.,induction: Up-regulated by estradiol. Down-regulated by tamoxifen.,similarity: Belongs to the small GTPase superfamily. Ras family.,tissue specificity: Detected in heart, brain, placenta, lung, liver, skin, kidney and pancreas. Detected in estrogen receptor-positive breast-derived cell lines, but not in estrogen receptor-negative cell lines.,

Research Area

Image Data



Immunohistochemical analysis of paraffin-embedded human tonsil. 1, Tris-EDTA, pH 9.0 was used for antigen retrieval. 2 Antibody was diluted at 1:200 (4° overnight). 3, Secondary antibody was diluted at 1:200 (room temperature, 45min) .

Note

For research use only.