

---

## Summary

<b>Production Name</b>	Repo-Man Rabbit Polyclonal Antibody
<b>Description</b>	Rabbit Polyclonal Antibody
<b>Host</b>	Rabbit
<b>Application</b>	WB,ELISA
<b>Reactivity</b>	Human

## Performance

<b>Conjugation</b>	Unconjugated
<b>Modification</b>	Unmodified
<b>Isotype</b>	IgG
<b>Clonality</b>	Polyclonal
<b>Form</b>	Liquid
<b>Storage</b>	Store at 4°C short term. Aliquot and store at -20°C long term. Avoid freeze/thaw cycles.
<b>Buffer</b>	Liquid in PBS containing 50% glycerol, 0.5% BSA and 0.02% New type preservative N.
<b>Purification</b>	Affinity purification

## Immunogen

<b>Gene Name</b>	CDCA2
<b>Alternative Names</b>	CDCA2; Cell division cycle-associated protein 2; Recruits PP1 onto mitotic chromatin at anaphase protein; Repo-Man
<b>Gene ID</b>	157313.0
<b>SwissProt ID</b>	Q69YH5.The antiserum was produced against synthesized peptide derived from human CDCA2. AA range:511-560

## Application

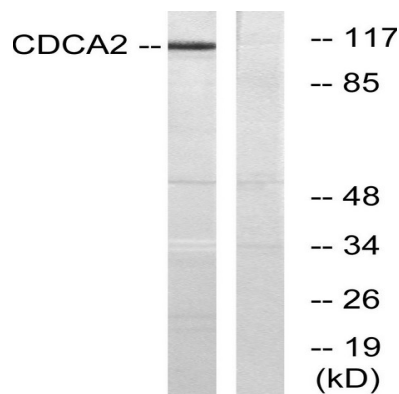
<b>Dilution Ratio</b>	WB 1:500 - 1:2000. ELISA: 1:5000.
<b>Molecular Weight</b>	120-130kD

## Background

cell division cycle associated 2(CDCA2) Homo sapiens This gene encodes a targeting subunit of the cell-cycle associated protein, protein phosphatase 1, with a role in targeting this protein to chromatin during anaphase. These two proteins comprise a phosphatase complex that is involved in nuclear envelope reformation and regulation of the DNA damage response. The encoded protein may also play a role in cancer progression. Alternative splicing results in multiple transcript variants. [provided by RefSeq, Dec 2015],function:Regulator of chromosome structure during mitosis required for condensin-depleted chromosomes to retain their compact architecture through anaphase. Acts by mediating the recruitment of phosphatase PP1-gamma subunit (PPP1CC) to chromatin at anaphase and into the following interphase. At anaphase onset, its association with chromatin targets a pool of PPP1CC to dephosphorylate substrates.,PTM:Phosphorylated by CDK1. May regulate its subcellular location.,subcellular location:Excluded from the nucleolus. Present in nucleoplasm throughout the G1, S and G2 stages of the cell cycle. During M phase, it becomes diffuse throughout the cell as the nuclear membrane breaks down, and faintly accumulates later on metaphase chromatin. As the cell progresses to anaphase, it accumulates on chromatin.,subunit:Interacts with PPP1CC.,tissue specificity:Ubiquitously expressed.,

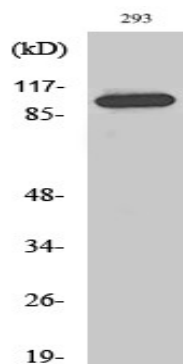
## Research Area

## Image Data



Western blot analysis of lysates from 293 cells, using CDCA2 Antibody. The lane on the right is blocked with the synthesized peptide.

**Product Name: Repo-Man Rabbit Polyclonal Antibody**  
**Catalog #: APRab17025**



Western Blot analysis of various cells using Repo-Man Polyclonal Antibody diluted at 1: 2000 cells nucleus extracted by Minute TM Cytoplasmic and Nuclear Fractionation kit (SC-003, Inventbiotech, MN, USA) .

**Note**

For research use only.