

Summary

Production Name	RECS1 Rabbit Polyclonal Antibody
Description	Rabbit Polyclonal Antibody
Host	Rabbit
Application	WB,ELISA
Reactivity	Human,Mouse,Rat

Performance

Conjugation	Unconjugated
Modification	Unmodified
Isotype	IgG
Clonality	Polyclonal
Form	Liquid
Storage	Store at 4°C short term. Aliquot and store at -20°C long term. Avoid freeze/thaw cycles.
Buffer	Liquid in PBS containing 50% glycerol, 0.5% BSA and 0.02% New type preservative N.
Purification	Affinity purification

Immunogen

Gene Name	TMBIM1
Alternative Names	TMBIM1; LFG3; RECS1; PP1201; PSEC0158; Protein lifeguard 3; Protein RECS1 homolog; Transmembrane BAX inhibitor motif-containing protein 1
Gene ID	64114.0
SwissProt ID	Q969X1.The antiserum was produced against synthesized peptide derived from human TMBIM1. AA range:251-300

Application

Dilution Ratio	WB 1:500 - 1:2000. ELISA: 1:40000..
Molecular Weight	35kD

Product Name: RECS1 Rabbit Polyclonal Antibody
Catalog #: APRab16994

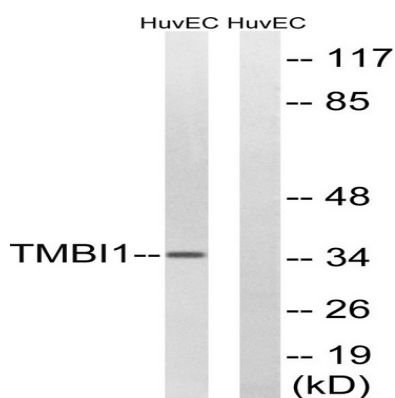


Background

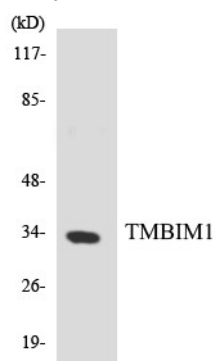
similarity:Belongs to the BI1 family.,similarity:Belongs to the BI1 family.,

Research Area

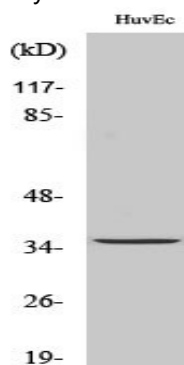
Image Data



Western blot analysis of lysates from HUVEC cells, using TMBIM1 Antibody. The lane on the right is blocked with the synthesized peptide.



Western blot analysis of the lysates from K562 cells using TMBIM1 antibody.



Western Blot analysis of various cells using RECS1 Polyclonal Antibody diluted at 1: 1000

Product Name: RECS1 Rabbit Polyclonal Antibody
Catalog #: APRab16994



Note

For research use only.