

Product Name: RCC1 Rabbit Polyclonal Antibody
Catalog #: APRab16979



Summary

Production Name	RCC1 Rabbit Polyclonal Antibody
Description	Rabbit Polyclonal Antibody
Host	Rabbit
Application	WB,IHC,ELISA
Reactivity	Human,Mouse,Rat

Performance

Conjugation	Unconjugated
Modification	Unmodified
Isotype	IgG
Clonality	Polyclonal
Form	Liquid
Storage	Store at 4°C short term. Aliquot and store at -20°C long term. Avoid freeze/thaw cycles.
Buffer	Liquid in PBS containing 50% glycerol, 0.5% BSA and 0.02% New type preservative N.
Purification	Affinity purification

Immunogen

Gene Name	RCC1 CHC1
Alternative Names	RCC1 CHC1
Gene ID	1104.0
SwissProt ID	P18754.Synthetic peptide from human protein at AA range: 301-350

Application

Dilution Ratio	WB 1:500-2000,IHC-p 1:50-200 ELISA 1:10000-20000.
Molecular Weight	45kD

Background

disease:Patients with Raynaud disease produce antibodies that bind to RCC1.,function:Promotes the exchange of Ran-

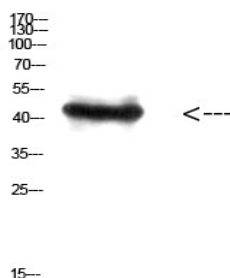
Product Name: RCC1 Rabbit Polyclonal Antibody
Catalog #: APRab16979



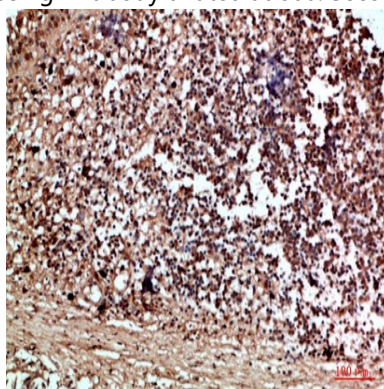
bound GDP by GTP. Involved in the regulation of onset of chromosome condensation in the S phase. Binds to the chromatin. RCC1/Ran complex (together with other proteins) acts as a component of a signal transmission pathway that detects unreplicated DNA.,similarity:Contains 7 RCC1 repeats.,subcellular location:Becomes dispersed throughout the cytoplasm during mitosis.,disease:Patients with Raynaud disease produce antibodies that bind to RCC1.,function:Promotes the exchange of Ran-bound GDP by GTP. Involved in the regulation of onset of chromosome condensation in the S phase. Binds to the chromatin. RCC1/Ran complex (together with other proteins) acts as a component of a signal transmission pathway that detects unreplicated DNA.,similarity:Contains 7 RCC1 repeats.,subcellular location:Becomes dispersed throughout the cytoplasm during mitosis.,

Research Area

Image Data

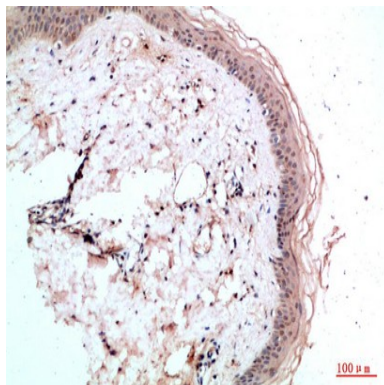


Western Blot analysis of HEPG2 cells using Antibody diluted at 800. Secondary antibody was diluted at 1:20000



Immunohistochemical analysis of paraffin-embedded human-thyroid, antibody was diluted at 1:200

Product Name: RCC1 Rabbit Polyclonal Antibody
Catalog #: APRab16979



Immunohistochemical analysis of paraffin-embedded human-skin, antibody was diluted at 1:200

Note

For research use only.