

Product Name: RBM34 Rabbit Polyclonal Antibody
Catalog #: APRab16957



Summary

Production Name	RBM34 Rabbit Polyclonal Antibody
Description	Rabbit Polyclonal Antibody
Host	Rabbit
Application	WB,IHC,ELISA
Reactivity	Human,Mouse,Rat

Performance

Conjugation	Unconjugated
Modification	Unmodified
Isotype	IgG
Clonality	Polyclonal
Form	Liquid
Storage	Store at 4°C short term. Aliquot and store at -20°C long term. Avoid freeze/thaw cycles.
Buffer	Liquid in PBS containing 50% glycerol, 0.5% BSA and 0.02% New type preservative N.
Purification	Affinity purification

Immunogen

Gene Name	RBM34
Alternative Names	RBM34; KIAA0117; RNA-binding protein 34; RNA-binding motif protein 34
Gene ID	23029.0
SwissProt ID	P42696.The antiserum was produced against synthesized peptide derived from human RBM34. AA range:345-394

Application

Dilution Ratio	WB 1:500 - 1:2000. IHC 1:100 - 1:300. ELISA: 1:20000..
Molecular Weight	50kD

Background

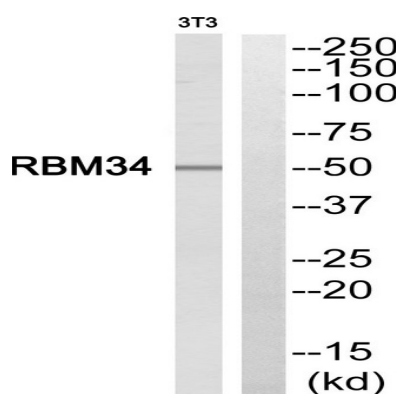
Product Name: RBM34 Rabbit Polyclonal Antibody
Catalog #: AP Rab16957



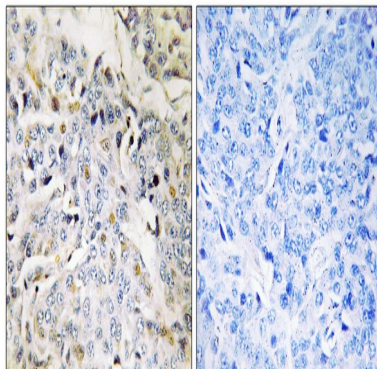
PTM:Phosphorylated upon DNA damage, probably by ATM or ATR.,similarity:Belongs to the RRM RBM34 family.,similarity:Contains 2 RRM (RNA recognition motif) domains.,PTM:Phosphorylated upon DNA damage, probably by ATM or ATR.,similarity:Belongs to the RRM RBM34 family.,similarity:Contains 2 RRM (RNA recognition motif) domains.,

Research Area

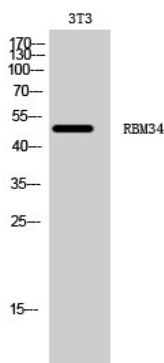
Image Data



Western blot analysis of RBM34 Antibody. The lane on the right is blocked with the RBM34 peptide.



Immunohistochemistry analysis of paraffin-embedded human breast carcinoma tissue, using RBM34 Antibody. The picture on the right is blocked with the synthesized peptide.



Product Name: RBM34 Rabbit Polyclonal Antibody
Catalog #: APRab16957



Western Blot analysis of 3T3 cells using RBM34 Polyclonal Antibody cells nucleus extracted by Minute TM Cytoplasmic and Nuclear Fractionation kit (SC-003, Invent biotech, MN, USA) .

Note

For research use only.