

**Product Name: RBM16 Rabbit Polyclonal Antibody**  
**Catalog #: APRab16950**



## Summary

<b>Production Name</b>	RBM16 Rabbit Polyclonal Antibody
<b>Description</b>	Rabbit Polyclonal Antibody
<b>Host</b>	Rabbit
<b>Application</b>	WB
<b>Reactivity</b>	Human,Mouse,Rat

## Performance

<b>Conjugation</b>	Unconjugated
<b>Modification</b>	Unmodified
<b>Isotype</b>	IgG
<b>Clonality</b>	Polyclonal
<b>Form</b>	Liquid
<b>Storage</b>	Store at 4°C short term. Aliquot and store at -20°C long term. Avoid freeze/thaw cycles.
<b>Buffer</b>	Liquid in PBS containing 50% glycerol, 0.5% BSA and 0.02% New type preservative N.
<b>Purification</b>	Affinity purification

## Immunogen

<b>Gene Name</b>	SCAF8
<b>Alternative Names</b>	SCAF8; CCAP7; KIAA1116; RBM16; Protein SCAF8; CDC5L complex-associated protein 7; RNA-binding motif protein 16; SR-related and CTD-associated factor 8
<b>Gene ID</b>	22828.0
<b>SwissProt ID</b>	Q9UPN6.Synthesized peptide derived from RBM16 . at AA range: 550-630

## Application

<b>Dilution Ratio</b>	WB 1:500-2000
<b>Molecular Weight</b>	140kD

## Background

PTM:Phosphorylated upon DNA damage, probably by ATM or ATR.,similarity:Contains 1 CID domain.,similarity:Contains 1

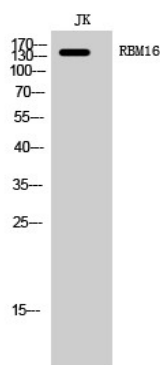
**Product Name: RBM16 Rabbit Polyclonal Antibody**  
**Catalog #: APRab16950**



RRM (RNA recognition motif) domain.,PTM:Phosphorylated upon DNA damage, probably by ATM or ATR.,similarity:Contains 1 CID domain.,similarity:Contains 1 RRM (RNA recognition motif) domain.,

## Research Area

## Image Data



Western Blot analysis of JK cells using RBM16 Polyclonal Antibody cells nucleus extracted by Minute TM Cytoplasmic and Nuclear Fractionation kit (SC-003, Invent biotech, MN, USA) .

## Note

For research use only.