

Product Name: RASSF6 Rabbit Polyclonal Antibody
Catalog #: AP Rab16924



Summary

Production Name	RASSF6 Rabbit Polyclonal Antibody
Description	Rabbit Polyclonal Antibody
Host	Rabbit
Application	WB, ELISA
Reactivity	Human, Rat, Mouse

Performance

Conjugation	Unconjugated
Modification	Unmodified
Isotype	IgG
Clonality	Polyclonal
Form	Liquid
Storage	Store at 4°C short term. Aliquot and store at -20°C long term. Avoid freeze/thaw cycles.
Buffer	Liquid in PBS containing 50% glycerol, 0.5% BSA and 0.02% New type preservative N.
Purification	Affinity purification

Immunogen

Gene Name	RASSF6
Alternative Names	RASSF6; Ras association domain-containing protein 6
Gene ID	166824.0
SwissProt ID	Q6ZTQ3. The antiserum was produced against synthesized peptide derived from human RASSF6. AA range: 129-178

Application

Dilution Ratio	WB 1:500 - 1:2000. ELISA: 1:10000. Not yet tested in other applications.
Molecular Weight	45kD

Background

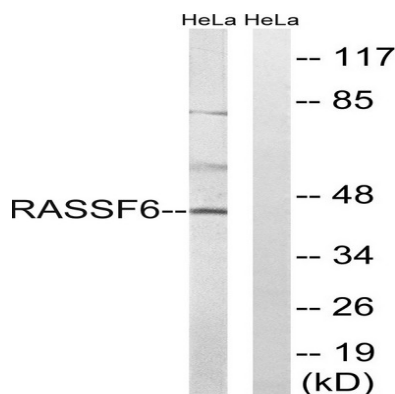
Product Name: RASSF6 Rabbit Polyclonal Antibody
Catalog #: APRab16924



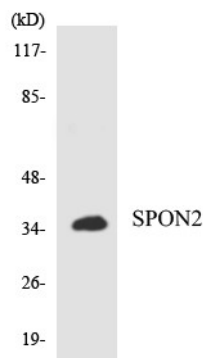
This gene encodes a member of the Ras-association domain family (RASSF). Members of this family form the core of a highly conserved tumor suppressor network, the Salvador-Warts-Hippo (SWH) pathway. The protein encoded by this gene is a Ras effector protein that induces apoptosis. A genomic region containing this gene has been linked to susceptibility to viral bronchiolitis. Alternative splicing results in multiple transcript variants and protein isoforms. [provided by RefSeq, Jul 2012],function:May act as a Ras effector protein.,sequence caution:Translated as Gln.,similarity:Contains 1 Ras-associating domain.,similarity:Contains 1 SARAH domain.,

Research Area

Image Data

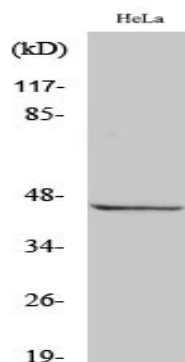


Western blot analysis of lysates from HeLa cells, using RASSF6 Antibody. The lane on the right is blocked with the synthesized peptide.



Western blot analysis of the lysates from K562 cells using RASSF6 antibody.

Product Name: RASSF6 Rabbit Polyclonal Antibody
Catalog #: APRab16924



Western Blot analysis of various cells using RASSF6 Polyclonal Antibody

Note

For research use only.