

Summary

Production Name	Ran BP-6 Rabbit Polyclonal Antibody
Description	Rabbit Polyclonal Antibody
Host	Rabbit
Application	WB,ELISA
Reactivity	Human,Mouse,Rat,Monkey

Performance

Conjugation	Unconjugated
Modification	Unmodified
Isotype	IgG
Clonality	Polyclonal
Form	Liquid
Storage	Store at 4°C short term. Aliquot and store at -20°C long term. Avoid freeze/thaw cycles.
Buffer	Liquid in PBS containing 50% glycerol, 0.5% BSA and 0.02% New type preservative N.
Purification	Affinity purification

Immunogen

Gene Name	RANBP6
Alternative Names	RANBP6; Ran-binding protein 6; RanBP6
Gene ID	26953.0
SwissProt ID	O60518.The antiserum was produced against synthesized peptide derived from human RANBP6. AA range:800-849

Application

Dilution Ratio	WB 1:500-2000 ELISA 2000-20000
Molecular Weight	125kD

Background

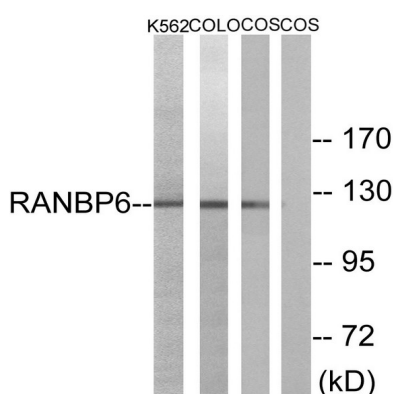
Product Name: Ran BP-6 Rabbit Polyclonal Antibody
Catalog #: APRab16879



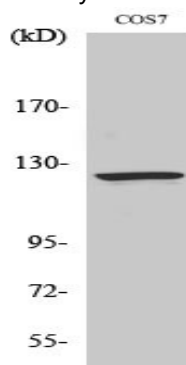
function:May function in nuclear protein import as nuclear transport receptor.,similarity:Belongs to the importin beta family.,similarity:Contains 7 HEAT repeats.,function:May function in nuclear protein import as nuclear transport receptor.,similarity:Belongs to the importin beta family.,similarity:Contains 7 HEAT repeats.,

Research Area

Image Data



Western blot analysis of lysates from COS7, K562, and COLO cells, using RANBP6 Antibody. The lane on the right is blocked with the synthesized peptide.



Western Blot analysis of various cells using Ran BP-6 Polyclonal Antibody

Note

For research use only.