

Product Name: Ran BP-17 Rabbit Polyclonal Antibody
Catalog #: AP Rab16878



Summary

Production Name	Ran BP-17 Rabbit Polyclonal Antibody
Description	Rabbit Polyclonal Antibody
Host	Rabbit
Application	WB
Reactivity	Human,Mouse

Performance

Conjugation	Unconjugated
Modification	Unmodified
Isotype	IgG
Clonality	Polyclonal
Form	Liquid
Storage	Store at 4°C short term. Aliquot and store at -20°C long term. Avoid freeze/thaw cycles.
Buffer	Liquid in PBS containing 50% glycerol, 0.5% BSA and 0.02% New type preservative N.
Purification	Affinity purification

Immunogen

Gene Name	RANBP17
Alternative Names	RANBP17; Ran-binding protein 17
Gene ID	64901.0
SwissProt ID	Q9H2T7. The antiserum was produced against synthesized peptide derived from human RANBP17. AA range:145-194

Application

Dilution Ratio	WB 1:500-2000
Molecular Weight	125kD

Background

RAN binding protein 17(RANBP17) Homo sapiens The transport of protein and large RNAs through the nuclear pore

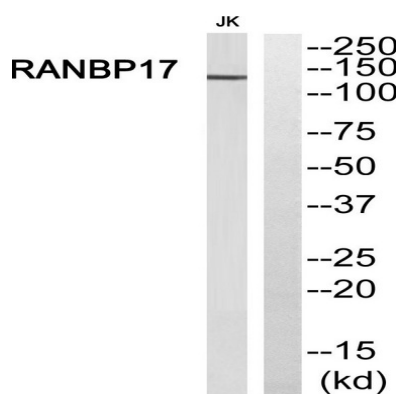
Product Name: Ran BP-17 Rabbit Polyclonal Antibody
Catalog #: APRab16878



complexes (NPC) is an energy-dependent and regulated process. The import of proteins with a nuclear localization signal (NLS) is accomplished by recognition of one or more clusters of basic amino acids by the importin-alpha/beta complex; see MIM 600685 and MIM 602738. The small GTPase RAN (MIM 601179) plays a key role in NLS-dependent protein import. RAN-binding protein-17 is a member of the importin-beta superfamily of nuclear transport receptors.[supplied by OMIM, Jul 2002],function:May function as a nuclear transport receptor.,similarity:Belongs to the exportin family.,subunit:Binds to nucleoporins and the GTP-bound form of Ran.,tissue specificity:Highly expressed in testis, moderately in pancreas and weakly in other tissues studied.,

Research Area

Image Data



Western blot analysis of RANBP17 Antibody. The lane on the right is blocked with the RANBP17 peptide.

Note

For research use only.