

**Product Name: RAIN Rabbit Polyclonal Antibody**  
**Catalog #: APRab16869**



## Summary

<b>Production Name</b>	RAIN Rabbit Polyclonal Antibody
<b>Description</b>	Rabbit Polyclonal Antibody
<b>Host</b>	Rabbit
<b>Application</b>	WB
<b>Reactivity</b>	Human,Rat,Mouse

## Performance

<b>Conjugation</b>	Unconjugated
<b>Modification</b>	Unmodified
<b>Isotype</b>	IgG
<b>Clonality</b>	Polyclonal
<b>Form</b>	Liquid
<b>Storage</b>	Store at 4°C short term. Aliquot and store at -20°C long term. Avoid freeze/thaw cycles.
<b>Buffer</b>	Liquid in PBS containing 50% glycerol, and 0.02% New type preservative N.
<b>Purification</b>	Affinity purification

## Immunogen

<b>Gene Name</b>	RASIP1
<b>Alternative Names</b>	
<b>Gene ID</b>	54922.0
<b>SwissProt ID</b>	Q5U651.Synthesized peptide derived from human protein . at AA range: 620-700

## Application

<b>Dilution Ratio</b>	WB 1:500-2000 ELISA 1:5000-20000
<b>Molecular Weight</b>	105kD

## Background

function:May act as effector for Golgi-bound HRAS and other Ras-like proteins. May promote HRAS-mediated transformation.,similarity:Contains 1 dilute domain.,similarity:Contains 1 Ras-associating domain.,subcellular

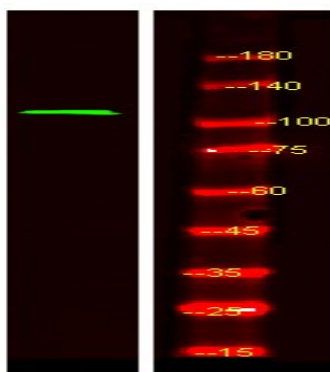
**Product Name: RAIN Rabbit Polyclonal Antibody**  
**Catalog #: APRab16869**



location:Associated with perinuclear vesicles. Is recruited to Golgi stacks by activated HRAS.,subunit:Interacts with Ras family members that have been activated by GTP binding. Interacts with HRAS, RAP1A, RAP2, RRAS, RAF1 and RRAS2.,tissue specificity:Highly expressed in heart. Detected at lower levels in placenta and pancreas.,function:May act as effector for Golgi-bound HRAS and other Ras-like proteins. May promote HRAS-mediated transformation.,similarity:Contains 1 dilute domain.,similarity:Contains 1 Ras-associating domain.,subcellular location:Associated with perinuclear vesicles. Is recruited to Golgi stacks by activated HRAS.,subunit:Interacts with Ras family members that have been activated by GTP binding. Interacts with HRAS, RAP1A, RAP2, RRAS, RAF1 and RRAS2.,tissue specificity:Highly expressed in heart. Detected at lower levels in placenta and pancreas.,

## Research Area

## Image Data



Western Blot analysis of Hela lysis, using primary antibody at 1:1000 dilution. Secondary antibody was diluted at 1:10000

## Note

For research use only.