

Product Name: RAGE Rabbit Polyclonal Antibody
Catalog #: APRab16864



Summary

Production Name	RAGE Rabbit Polyclonal Antibody
Description	Rabbit Polyclonal Antibody
Host	Rabbit
Application	IHC, WB, ELISA
Reactivity	Human, Rat, Mouse

Performance

Conjugation	Unconjugated
Modification	Unmodified
Isotype	IgG
Clonality	Polyclonal
Form	Liquid
Storage	Store at 4°C short term. Aliquot and store at -20°C long term. Avoid freeze/thaw cycles.
Buffer	Liquid in PBS containing 50% glycerol, 0.5% BSA and 0.02% New type preservative N.
Purification	Affinity purification

Immunogen

Gene Name	AGER
Alternative Names	AGER; RAGE; Advanced glycosylation end product-specific receptor; Receptor for advanced glycosylation end products
Gene ID	177.0
SwissProt ID	Q15109. The antiserum was produced against synthesized peptide derived from human RAGE. AA range: 133-182

Application

Dilution Ratio	WB 1:500 - 1:2000. IHC 1:100 - 1:300. ELISA: 1:20000..
Molecular Weight	37kD

Product Name: RAGE Rabbit Polyclonal Antibody
Catalog #: AP Rab16864

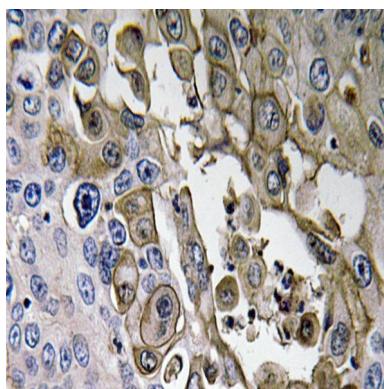


Background

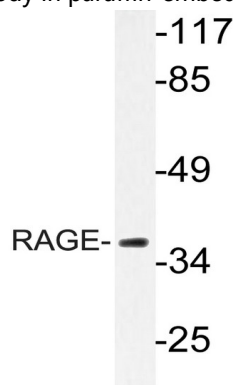
The advanced glycosylation end product (AGE) receptor encoded by this gene is a member of the immunoglobulin superfamily of cell surface receptors. It is a multiligand receptor, and besides AGE, interacts with other molecules implicated in homeostasis, development, and inflammation, and certain diseases, such as diabetes and Alzheimer's disease. Many alternatively spliced transcript variants encoding different isoforms, as well as non-protein-coding variants, have been described for this gene (PMID:18089847). [provided by RefSeq, May 2011],function:Mediates interactions of advanced glycosylation end products (AGE). These are nonenzymatically glycosylated proteins which accumulate in vascular tissue in aging and at an accelerated rate in diabetes. Receptor for amyloid beta peptide.,similarity:Contains 1 Ig-like V-type (immunoglobulin-like) domain.,similarity:Contains 2 Ig-like C2-type (immunoglobulin-like) domains.,tissue specificity:Endothelial cells.,

Research Area

Image Data

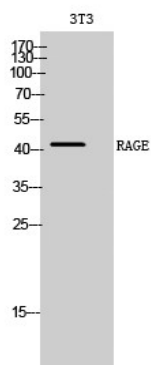


Immunohistochemistry analysis of RAGE antibody in paraffin-embedded human lung carcinoma tissue.



Western blot analysis of lysate from LOVO cells, using RAGE antibody.

Product Name: RAGE Rabbit Polyclonal Antibody
Catalog #: APRab16864



Western Blot analysis of 3T3 cells using RAGE Polyclonal Antibody diluted at 1: 1000

Note

For research use only.