

**Product Name: RAB28 Rabbit Polyclonal Antibody**  
**Catalog #: APRab16783**



## Summary

|                        |                                  |
|------------------------|----------------------------------|
| <b>Production Name</b> | RAB28 Rabbit Polyclonal Antibody |
| <b>Description</b>     | Rabbit Polyclonal Antibody       |
| <b>Host</b>            | Rabbit                           |
| <b>Application</b>     | WB                               |
| <b>Reactivity</b>      | Human,Rat,Mouse                  |

## Performance

|                     |  |
|---------------------|--|
| <b>Conjugation</b>  | Unconjugated   |
| <b>Modification</b> | Unmodified   |
| <b>Isotype</b>      | IgG  |
| <b>Clonality</b>    | Polyclonal   |
| <b>Form</b>         | Liquid   |
| <b>Storage</b>      | Store at 4°C short term. Aliquot and store at -20°C long term. Avoid freeze/thaw cycles. |
| <b>Buffer</b>       | Liquid in PBS containing 50% glycerol, and 0.02% New type preservative N.                |
| <b>Purification</b> | Affinity purification  |

## Immunogen

|                          |   |
|--------------------------|---|
| <b>Gene Name</b>         | RAB28   |
| <b>Alternative Names</b> |   |
| <b>Gene ID</b>           | 9364.0  |
| <b>SwissProt ID</b>      | P51157.Synthesized peptide derived from human protein . at AA range: 80-160 |

## Application

|                         |                                  |
|-------------------------|----------------------------------|
| <b>Dilution Ratio</b>   | WB 1:500-2000 ELISA 1:5000-20000 |
| <b>Molecular Weight</b> | 24kD                             |

## Background

This gene encodes a member of the Rab subfamily of Ras-related small GTPases. The encoded protein may be involved in regulating intracellular trafficking. Alternative splicing results in multiple transcript variants. Pseudogenes of this gene are

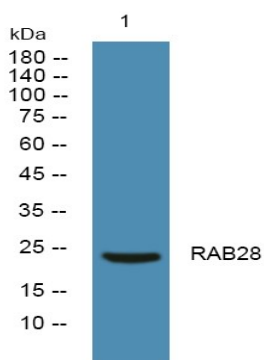
**Product Name: RAB28 Rabbit Polyclonal Antibody**  
**Catalog #: AP Rab16783**



found on chromosomes 9 and X. [provided by RefSeq, Apr 2009],similarity:Belongs to the small GTPase superfamily. Rab family.,tissue specificity:Isoform S is detected in most tissues investigated (cortex, liver, kidney, skeletal muscle, adipose tissue, testis and urothelium), whereas isoform L is predominant in testis.,

## Research Area

## Image Data



Western blot analysis of lysates from A431 cells, primary antibody was diluted at 1:1000, 4° over night

## Note

For research use only.