

Product Name: RAB19 Rabbit Polyclonal Antibody
Catalog #: APRab16777



Summary

Production Name	RAB19 Rabbit Polyclonal Antibody
Description	Rabbit Polyclonal Antibody
Host	Rabbit
Application	WB
Reactivity	Human,Rat,Mouse

Performance

Conjugation	Unconjugated
Modification	Unmodified
Isotype	IgG
Clonality	Polyclonal
Form	Liquid
Storage	Store at 4°C short term. Aliquot and store at -20°C long term. Avoid freeze/thaw cycles.
Buffer	Liquid in PBS containing 50% glycerol, and 0.02% New type preservative N.
Purification	Affinity purification

Immunogen

Gene Name	RAB19 RAB19B
Alternative Names	
Gene ID	401409.0
SwissProt ID	A4D1S5.Synthesized peptide derived from human protein . at AA range: 110-190

Application

Dilution Ratio	WB 1:500-2000 ELISA 1:5000-20000
Molecular Weight	23kD

Background

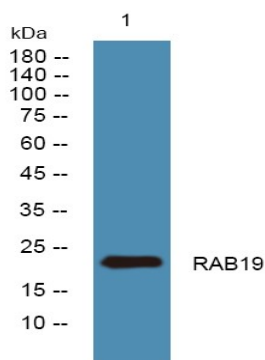
similarity:Belongs to the small GTPase superfamily. Rab family.,similarity:Belongs to the small GTPase superfamily. Rab family.,

Product Name: RAB19 Rabbit Polyclonal Antibody
Catalog #: APRab16777



Research Area

Image Data



Western blot analysis of lysates from A431 cells, primary antibody was diluted at 1:1000, 4° over night

Note

For research use only.