

**Product Name: RAB15 Rabbit Polyclonal Antibody**  
**Catalog #: APRab16775**



## Summary

<b>Production Name</b>	RAB15 Rabbit Polyclonal Antibody
<b>Description</b>	Rabbit Polyclonal Antibody
<b>Host</b>	Rabbit
<b>Application</b>	WB
<b>Reactivity</b>	Human,Mouse,Rat

## Performance

<b>Conjugation</b>	Unconjugated
<b>Modification</b>	Unmodified
<b>Isotype</b>	IgG
<b>Clonality</b>	Polyclonal
<b>Form</b>	Liquid
<b>Storage</b>	Store at 4°C short term. Aliquot and store at -20°C long term. Avoid freeze/thaw cycles.
<b>Buffer</b>	Liquid in PBS containing 50% glycerol, and 0.02% New type preservative N.
<b>Purification</b>	Affinity purification

## Immunogen

<b>Gene Name</b>	RAB15
<b>Alternative Names</b>	
<b>Gene ID</b>	376267.0
<b>SwissProt ID</b>	P59190.Synthesized peptide derived from human protein . at AA range: 80-160

## Application

<b>Dilution Ratio</b>	WB 1:500-2000 ELISA 1:5000-20000
<b>Molecular Weight</b>	23kD

## Background

function:May act in concert with RAB3A in regulating aspects of synaptic vesicle membrane flow within the nerve terminal.,similarity:Belongs to the small GTPase superfamily. Rab family.,subunit:The GTP bound form of RAB15 interacts

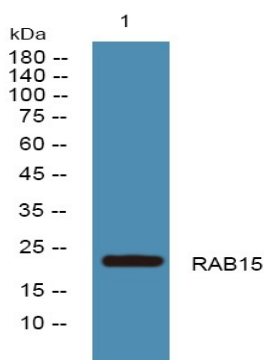
**Product Name: RAB15 Rabbit Polyclonal Antibody**  
**Catalog #: AP Rab16775**



with REP15.,function:May act in concert with RAB3A in regulating aspects of synaptic vesicle membrane flow within the nerve terminal.,similarity:Belongs to the small GTPase superfamily. Rab family.,subunit:The GTP bound form of RAB15 interacts with REP15.,

## Research Area

## Image Data



Western blot analysis of lysates from A431 cells, primary antibody was diluted at 1:1000, 4° over night

## Note

For research use only.