
Summary

Production Name	Rab11-FIP2 Rabbit Polyclonal Antibody
Description	Rabbit Polyclonal Antibody
Host	Rabbit
Application	WB,ELISA
Reactivity	Human,Mouse

Performance

Conjugation	Unconjugated
Modification	Unmodified
Isotype	IgG
Clonality	Polyclonal
Form	Liquid
Storage	Store at 4°C short term. Aliquot and store at -20°C long term. Avoid freeze/thaw cycles.
Buffer	Liquid in PBS containing 50% glycerol, 0.5% BSA and 0.02% New type preservative N.
Purification	Affinity purification

Immunogen

Gene Name	RAB11FIP2
Alternative Names	RAB11FIP2; KIAA0941; Rab11 family-interacting protein 2; Rab11-FIP2; NRip11
Gene ID	22841.0
SwissProt ID	Q7L804.The antiserum was produced against synthesized peptide derived from human RAB11FIP2. AA range:340-389

Application

Dilution Ratio	WB 1:500-2000 ELISA 2000-20000
Molecular Weight	58kD

Background

Product Name: Rab11-FIP2 Rabbit Polyclonal Antibody
Catalog #: APRab16769

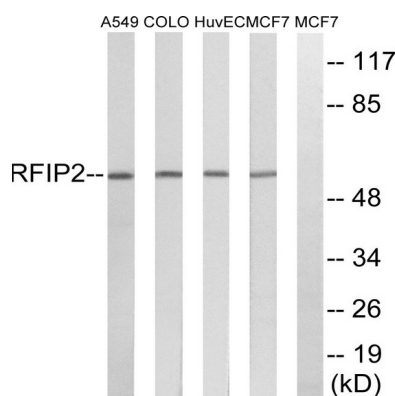


function:A Rab11 effector protein acting in the regulation of the transport of vesicles from the endosomal recycling compartment (ERC) to the plasma membrane. Also involved in receptor-mediated endocytosis and membrane trafficking of recycling endosomes, probably originating from clathrin-coated vesicles. Binds preferentially to phosphatidylinositol 3,4,5-trisphosphate (PtdInsP3) and phosphatidic acid (PA).,similarity:Contains 1 C2 domain.,subcellular location:Translocates with RAB11A from the vesicles of the endocytic recycling compartment (ERC) to the plasma membrane.,subunit:Homooligomerizes in a Rab11-independent manner. Forms an heterooligomeric complex with RAB11FIP4. Interacts with AP2A1, MYO5B, RAB11A, RAB11B, RAB25 and REPS1. Interacts with RAB11A/RAB11B that has been activated by GTP binding.,function:A Rab11 effector protein acting in the regulation of the transport of vesicles from the endosomal recycling compartment (ERC) to the plasma membrane. Also involved in receptor-mediated endocytosis and membrane trafficking of recycling endosomes, probably originating from clathrin-coated vesicles. Binds preferentially to phosphatidylinositol 3,4,5-trisphosphate (PtdInsP3) and phosphatidic acid (PA).,similarity:Contains 1 C2 domain.,subcellular location:Translocates with RAB11A from the vesicles of the endocytic recycling compartment (ERC) to the plasma membrane.,subunit:Homooligomerizes in a Rab11-independent manner. Forms an heterooligomeric complex with RAB11FIP4. Interacts with AP2A1, MYO5B, RAB11A, RAB11B, RAB25 and REPS1. Interacts with RAB11A/RAB11B that has been activated by GTP binding.,

Research Area

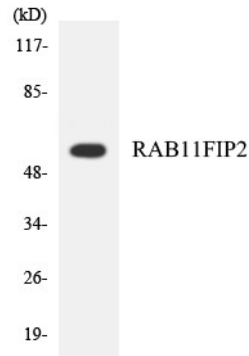
Endocytosis;

Image Data

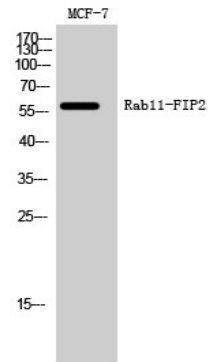


Western blot analysis of lysates from MCF-7, HUVEC, A549, and COLO cells, using RAB11FIP2 Antibody. The lane on the right is blocked with the synthesized peptide.

Product Name: Rab11-FIP2 Rabbit Polyclonal Antibody
Catalog #: APRab16769



Western blot analysis of the lysates from HepG2 cells using RAB11FIP2 antibody.



Western Blot analysis of MCF-7 cells using Rab11-FIP2 Polyclonal Antibody

Note

For research use only.