

Product Name: Rab 41 Rabbit Polyclonal Antibody
Catalog #: APRab16758



Summary

Production Name	Rab 41 Rabbit Polyclonal Antibody
Description	Rabbit Polyclonal Antibody
Host	Rabbit
Application	IHC,ELISA
Reactivity	Human,Rat,Mouse

Performance

Conjugation	Unconjugated
Modification	Unmodified
Isotype	IgG
Clonality	Polyclonal
Form	Liquid
Storage	Store at 4°C short term. Aliquot and store at -20°C long term. Avoid freeze/thaw cycles.
Buffer	Liquid in PBS containing 50% glycerol, 0.5% BSA and 0.02% New type preservative N.
Purification	Affinity purification

Immunogen

Gene Name	RAB41
Alternative Names	RAB41; Ras-related protein Rab-41
Gene ID	347517.0
SwissProt ID	Q5JT25.The antiserum was produced against synthesized peptide derived from human RAB41. AA range:115-164

Application

Dilution Ratio	IHC 1:100-1:300 ELISA: 1:20000
Molecular Weight	

Background

This gene encodes a small GTP-binding protein that belongs to the largest family within the Ras superfamily. These

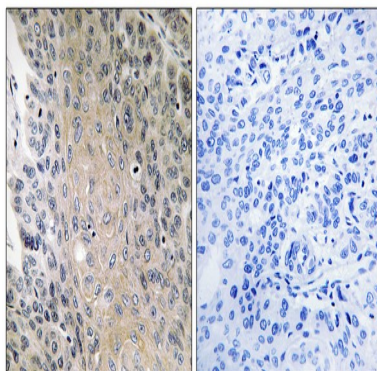
Product Name: Rab 41 Rabbit Polyclonal Antibody
Catalog #: APRab16758



proteins function as regulators of membrane trafficking. They cycle between inactive GDP-bound and activated GTP-bound states, which is controlled by GTP hydrolysis-activating proteins (GAPs). This family member can be activated by the GAP protein RN-Tre, and it is localized to the Golgi complex. [provided by RefSeq, May 2010],similarity:Belongs to the small GTPase superfamily. Rab family.,

Research Area

Image Data



Immunohistochemistry analysis of paraffin-embedded human lung carcinoma, using RAB41 Antibody. The picture on the right is blocked with the synthesized peptide.

Note

For research use only.