

Product Name: Rab 38 Rabbit Polyclonal Antibody
Catalog #: APRab16756



Summary

Production Name	Rab 38 Rabbit Polyclonal Antibody
Description	Rabbit Polyclonal Antibody
Host	Rabbit
Application	WB
Reactivity	Human,Mouse,Rat

Performance

Conjugation	Unconjugated
Modification	Unmodified
Isotype	IgG
Clonality	Polyclonal
Form	Liquid
Storage	Store at 4°C short term. Aliquot and store at -20°C long term. Avoid freeze/thaw cycles.
Buffer	Liquid in PBS containing 50% glycerol, 0.5% BSA and 0.02% New type preservative N.
Purification	Affinity purification

Immunogen

Gene Name	RAB38
Alternative Names	RAB38; Ras-related protein Rab-38; Melanoma antigen NY-MEL-1
Gene ID	23682.0
SwissProt ID	P57729.The antiserum was produced against synthesized peptide derived from human RAB38. AA range:80-129

Application

Dilution Ratio	WB 1:500-2000
Molecular Weight	26kD

Background

function:May be involved in melanosomal transport and docking. Involved in the proper sorting of TYRP1.,PTM:Although at

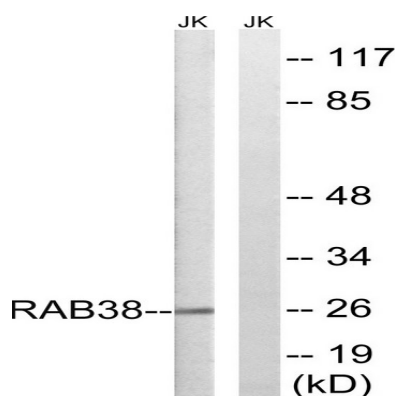
Product Name: Rab 38 Rabbit Polyclonal Antibody
Catalog #: AP Rab16756



least one in vitro system can process and methylate the prenylated C-terminal, in an in vitro system that normally express Rab-38 and in vivo the prenylated C-terminal is not proteolytically processed and not methylated.,similarity:Belongs to the small GTPase superfamily. Rab family.,tissue specificity:Expressed in melanocytes.,function:May be involved in melanosomal transport and docking. Involved in the proper sorting of TYRP1.,PTM:Although at least one in vitro system can process and methylate the prenylated C-terminal, in an in vitro system that normally express Rab-38 and in vivo the prenylated C-terminal is not proteolytically processed and not methylated.,similarity:Belongs to the small GTPase superfamily. Rab family.,tissue specificity:Expressed in melanocytes.,

Research Area

Image Data



Western blot analysis of lysates from Jurkat cells, using RAB38 Antibody. The lane on the right is blocked with the synthesized peptide.

Note

For research use only.