

Product Name: Rab 37 Rabbit Polyclonal Antibody
Catalog #: APRab16755



Summary

Production Name	Rab 37 Rabbit Polyclonal Antibody
Description	Rabbit Polyclonal Antibody
Host	Rabbit
Application	IHC, WB, ELISA
Reactivity	Human, Rat, Mouse

Performance

Conjugation	Unconjugated
Modification	Unmodified
Isotype	IgG
Clonality	Polyclonal
Form	Liquid
Storage	Store at 4°C short term. Aliquot and store at -20°C long term. Avoid freeze/thaw cycles.
Buffer	Liquid in PBS containing 50% glycerol, 0.5% BSA and 0.02% New type preservative N.
Purification	Affinity purification

Immunogen

Gene Name	RAB37
Alternative Names	RAB37; Ras-related protein Rab-37
Gene ID	326624.0
SwissProt ID	Q96AX2. The antiserum was produced against synthesized peptide derived from human RAB37. AA range: 170-219

Application

Dilution Ratio	WB 1:500 - 1:2000. IHC 1:100 - 1:300. ELISA: 1:5000..
Molecular Weight	26kD

Background

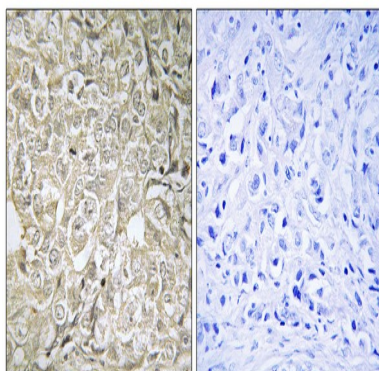
Product Name: Rab 37 Rabbit Polyclonal Antibody
Catalog #: AP Rab16755



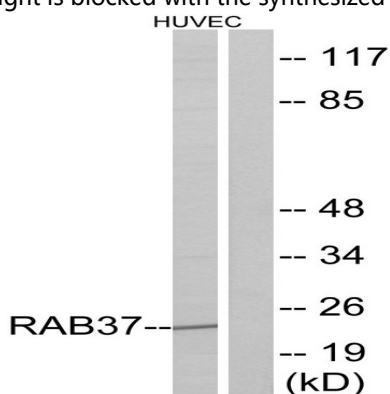
Rab proteins are low molecular mass GTPases that are critical regulators of vesicle trafficking. For additional background information on Rab proteins, see MIM 179508.[supplied by OMIM, Apr 2006],similarity:Belongs to the small GTPase superfamily. Rab family.,subcellular location:Secretory granules.,

Research Area

Image Data

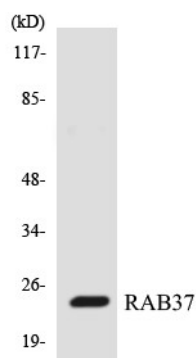


Immunohistochemistry analysis of paraffin-embedded human prostate carcinoma tissue, using RAB37 Antibody. The picture on the right is blocked with the synthesized peptide.



Western blot analysis of lysates from HUVEC cells, using RAB37 Antibody. The lane on the right is blocked with the synthesized peptide.

Product Name: Rab 37 Rabbit Polyclonal Antibody
Catalog #: APRab16755



Western blot analysis of the lysates from HepG2 cells using RAB37 antibody.

Note

For research use only.